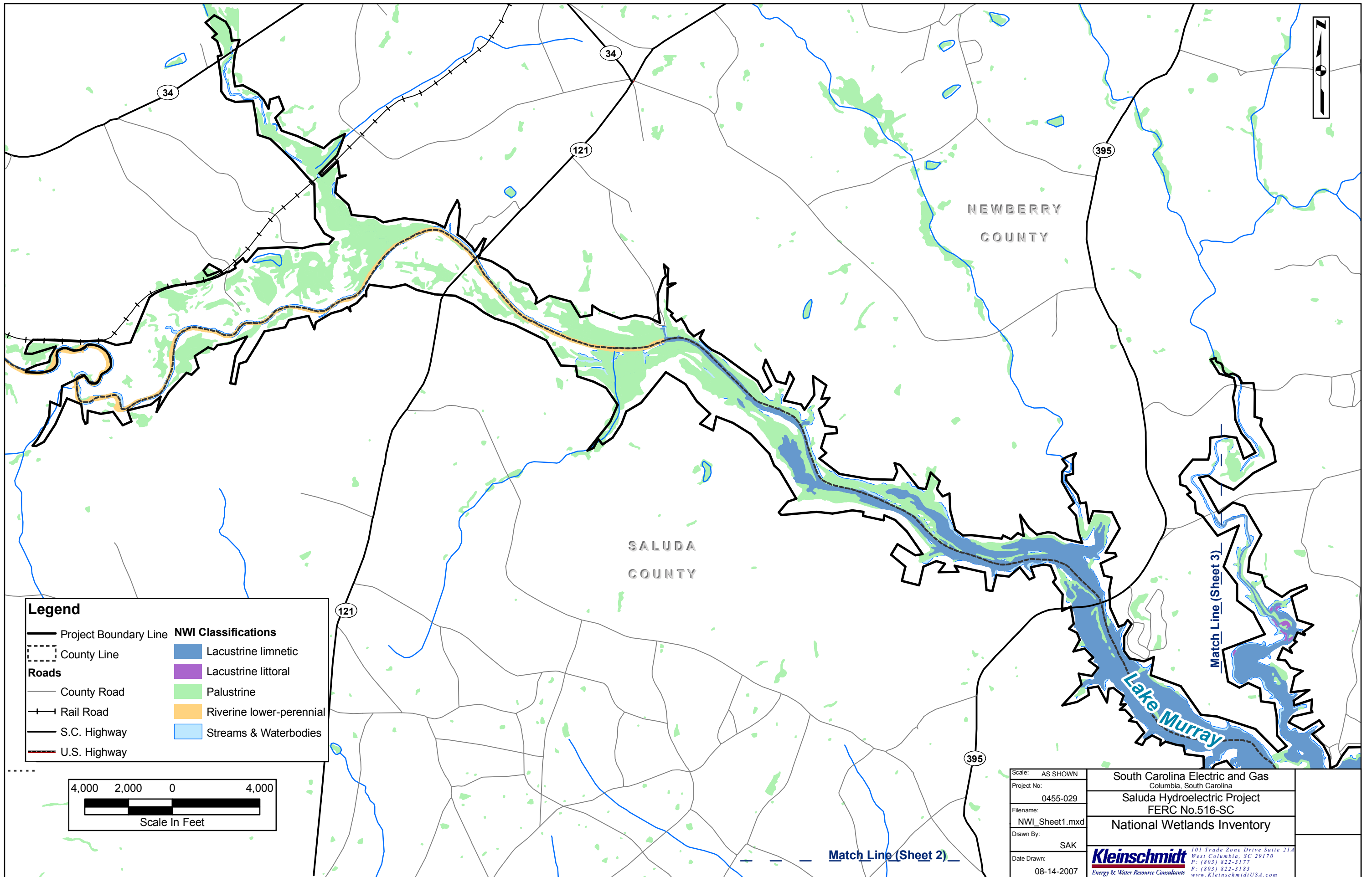
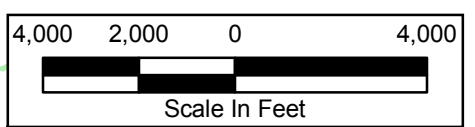


Scale: AS SHOWN	South Carolina Electric and Gas Columbia, South Carolina
Project No: 0455-029	
Filename: NWI_Index.mxd	Saluda Hydroelectric Project FERC No.516-SC
Drawn By: SAK	National Wetlands Inventory
Date Drawn: 08-14-2007	Kleinschmidt 101 Trade Zone Drive Suite 21A West Columbia, SC 29170 P: (803) 822-3177 F: (803) 822-3183 www.KleinschmidtUSA.com



Legend

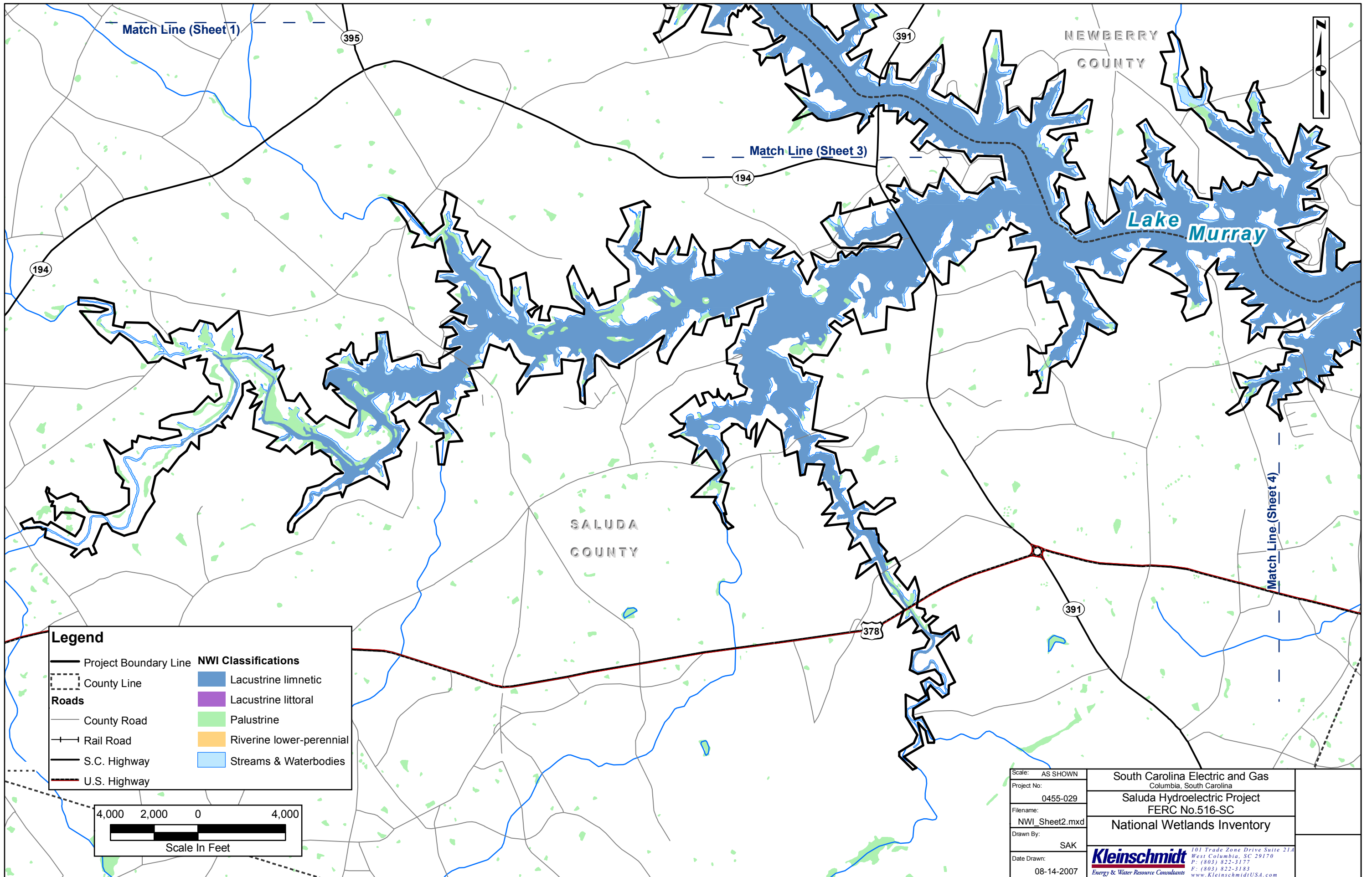
— Project Boundary Line	NWI Classifications
- - - County Line	■ Lacustrine limnetic
Roads	■ Lacustrine littoral
— County Road	■ Palustrine
+ + Rail Road	■ Riverine lower-perennial
— S.C. Highway	■ Streams & Waterbodies
— U.S. Highway	



Scale: AS SHOWN	South Carolina Electric and Gas Columbia, South Carolina
Project No: 0455-029	
Filename: NWI_Sheet1.mxd	Saluda Hydroelectric Project FERC No.516-SC
Drawn By: SAK	National Wetlands Inventory
Date Drawn: 08-14-2007	 <small>101 Trade Zone Drive Suite 21A West Columbia, SC 29170 P: (803) 822-3177 F: (803) 822-3183 www.KleinschmidtUSA.com</small>

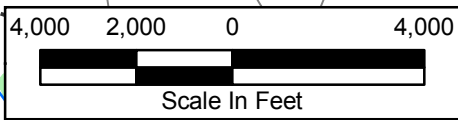
Match Line (Sheet 2)

Match Line (Sheet 3)

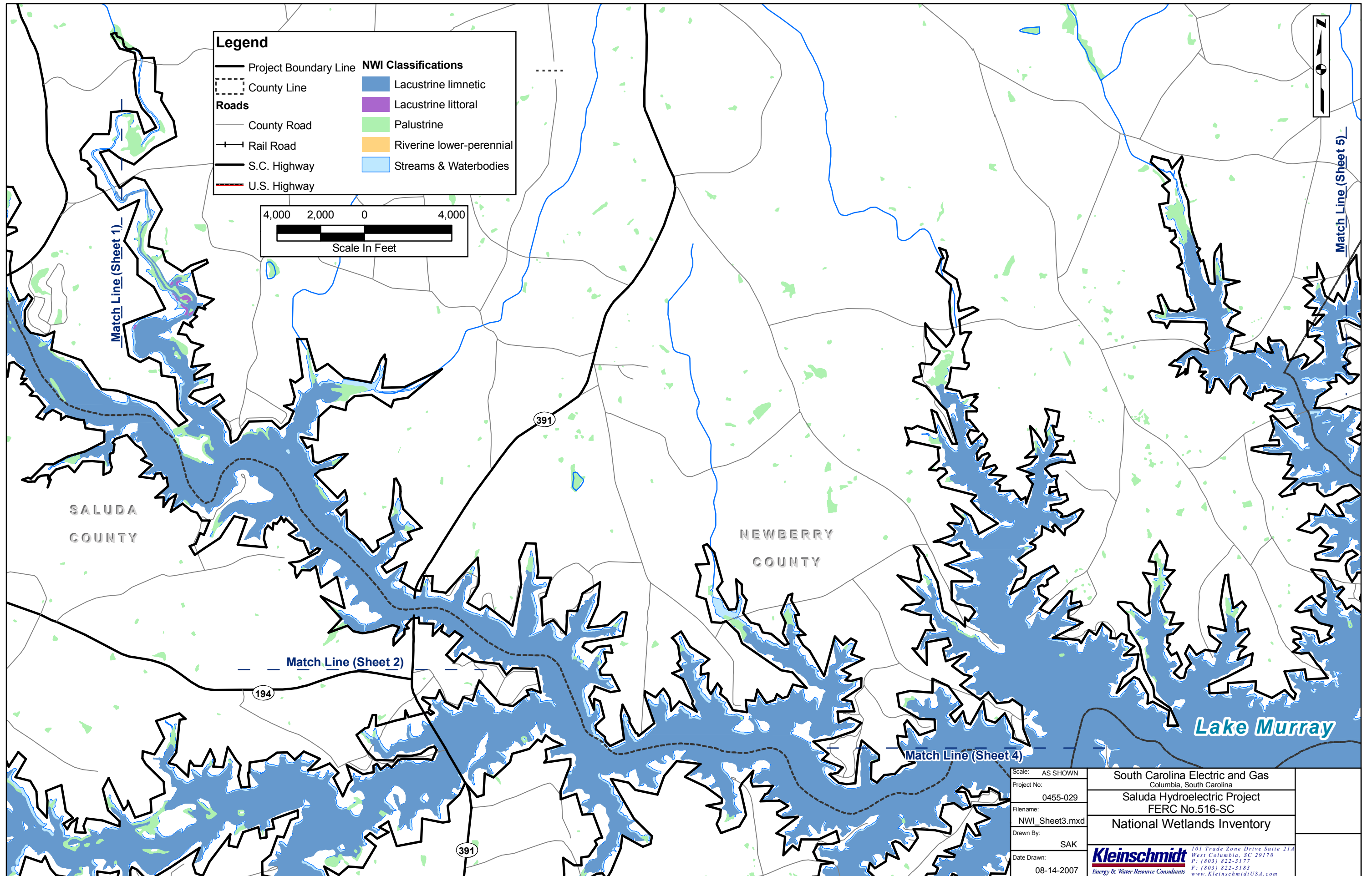


Legend

— Project Boundary Line	NWI Classifications
- - - County Line	■ Lacustrine limnetic
Roads	■ Lacustrine littoral
— County Road	■ Palustrine
+— Rail Road	■ Riverine lower-perennial
— S.C. Highway	■ Streams & Waterbodies
— U.S. Highway	



Scale: AS SHOWN	South Carolina Electric and Gas Columbia, South Carolina
Project No: 0455-029	Saluda Hydroelectric Project FERC No.516-SC
Filename: NWI_Sheet2.mxd	National Wetlands Inventory
Drawn By: SAK	 <small>101 Trade Zone Drive Suite 21A West Columbia, SC 29170 P: (803) 822-3177 F: (803) 822-3183 www.KleinschmidtUSA.com</small>
Date Drawn: 08-14-2007	



Legend

— Project Boundary Line

- - - County Line

Roads

— County Road

+— Rail Road

— S.C. Highway

— U.S. Highway

NWI Classifications

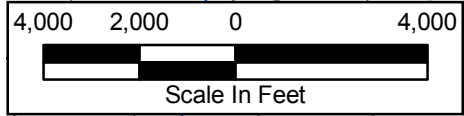
■ Lacustrine limnetic

■ Lacustrine littoral

■ Palustrine

■ Riverine lower-perennial

■ Streams & Waterbodies



SALUDA
COUNTY

NEWBERRY
COUNTY

Lake Murray

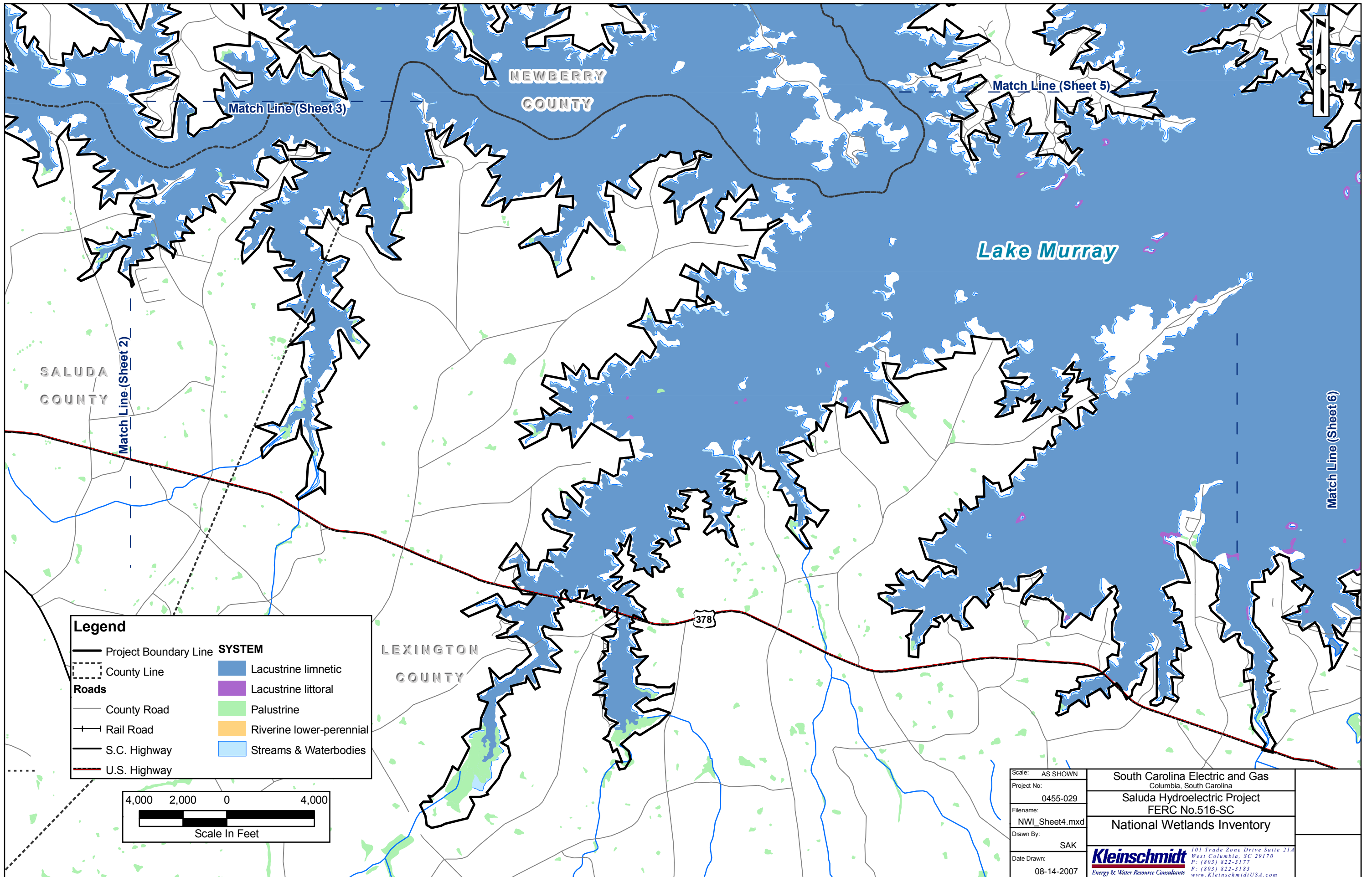
Match Line (Sheet 1)

Match Line (Sheet 2)

Match Line (Sheet 4)

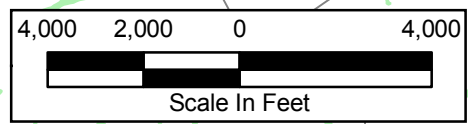
Match Line (Sheet 5)

Scale: AS SHOWN	South Carolina Electric and Gas Columbia, South Carolina
Project No: 0455-029	Saluda Hydroelectric Project FERC No.516-SC
Filename: NWI_Sheet3.mxd	National Wetlands Inventory
Drawn By: SAK	 <small>101 Trade Zone Drive Suite 21A West Columbia, SC 29170 P: (803) 822-3177 F: (803) 822-3183 www.KleinschmidtUSA.com</small>
Date Drawn: 08-14-2007	






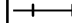


Legend





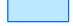
— Project Boundary Line	SYSTEM
- - - County Line	■ Lacustrine limnetic
— County Road	■ Lacustrine littoral
+ + + Rail Road	■ Palustrine
— S.C. Highway	■ Riverine lower-perennial
— U.S. Highway	■ Streams & Waterbodies

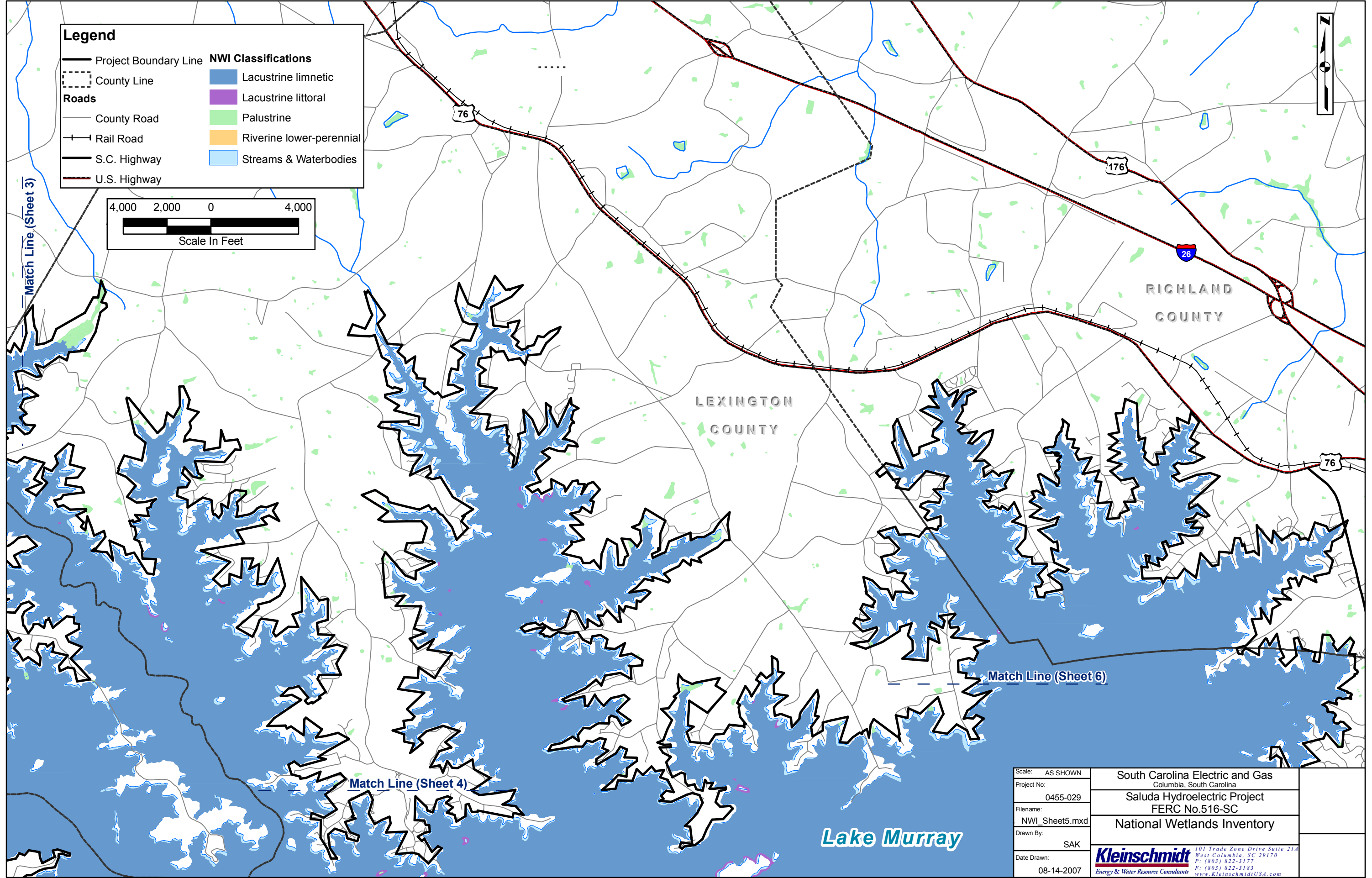
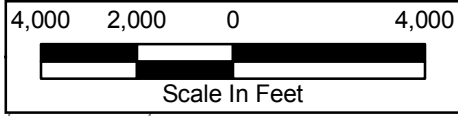


Scale: AS SHOWN	South Carolina Electric and Gas Columbia, South Carolina
Project No: 0455-029	Saluda Hydroelectric Project FERC No.516-SC
Filename: NWI_Sheet4.mxd	National Wetlands Inventory
Drawn By: SAK	 101 Trade Zone Drive Suite 21A West Columbia, SC 29170 P: (803) 822-3177 F: (803) 822-3183 www.KleinschmidtUSA.com
Date Drawn: 08-14-2007	

Legend

-  Project Boundary Line
-  County Line
-  County Road
-  Rail Road
-  S.C. Highway
-  U.S. Highway

- NWI Classifications**
-  Lacustrine limnetic
 -  Lacustrine littoral
 -  Palustrine
 -  Riverine lower-perennial
 -  Streams & Waterbodies



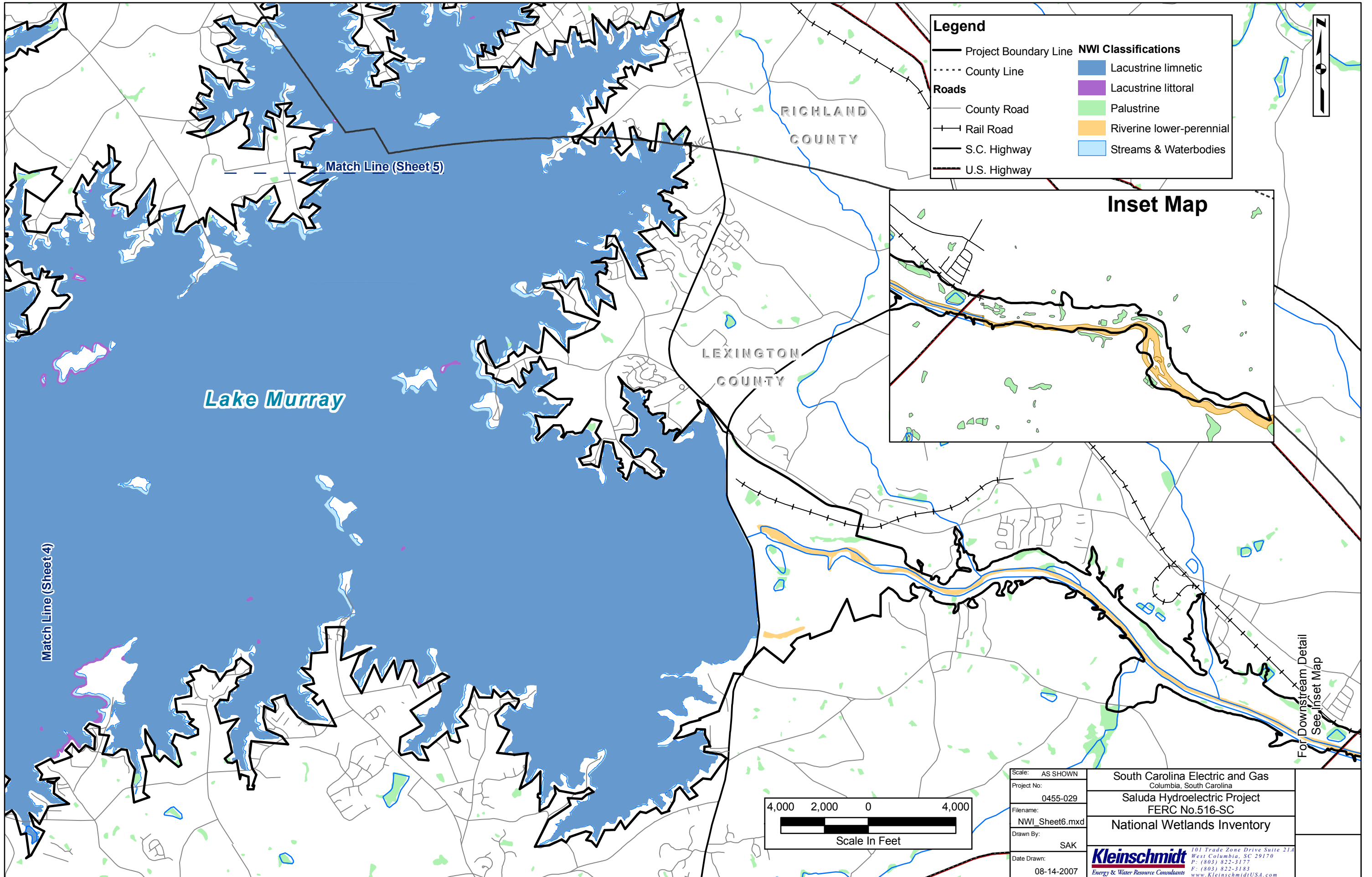
Match Line (Sheet 3)

Match Line (Sheet 4)

Match Line (Sheet 6)

Lake Murray

Scale: AS SHOWN	South Carolina Electric and Gas Columbia, South Carolina
Project No: 0455-029	Saluda Hydroelectric Project FERC No.516-SC
Filename: NWI_Sheet5.mxd	National Wetlands Inventory
Drawn By: SAK	 <small>101 Trade Zone Drive Suite 21A West Columbia, SC 29170 P: (803) 822-3177 F: (803) 822-3183 www.KleinschmidtUSA.com</small>
Date Drawn: 08-14-2007	



Lake Murray

RIGHLAND COUNTY

LEXINGTON COUNTY

Match Line (Sheet 5)

Match Line (Sheet 4)

For Downstream Detail See Inset Map