

Water Quality Update

Lake Murray ----Lower Saluda River

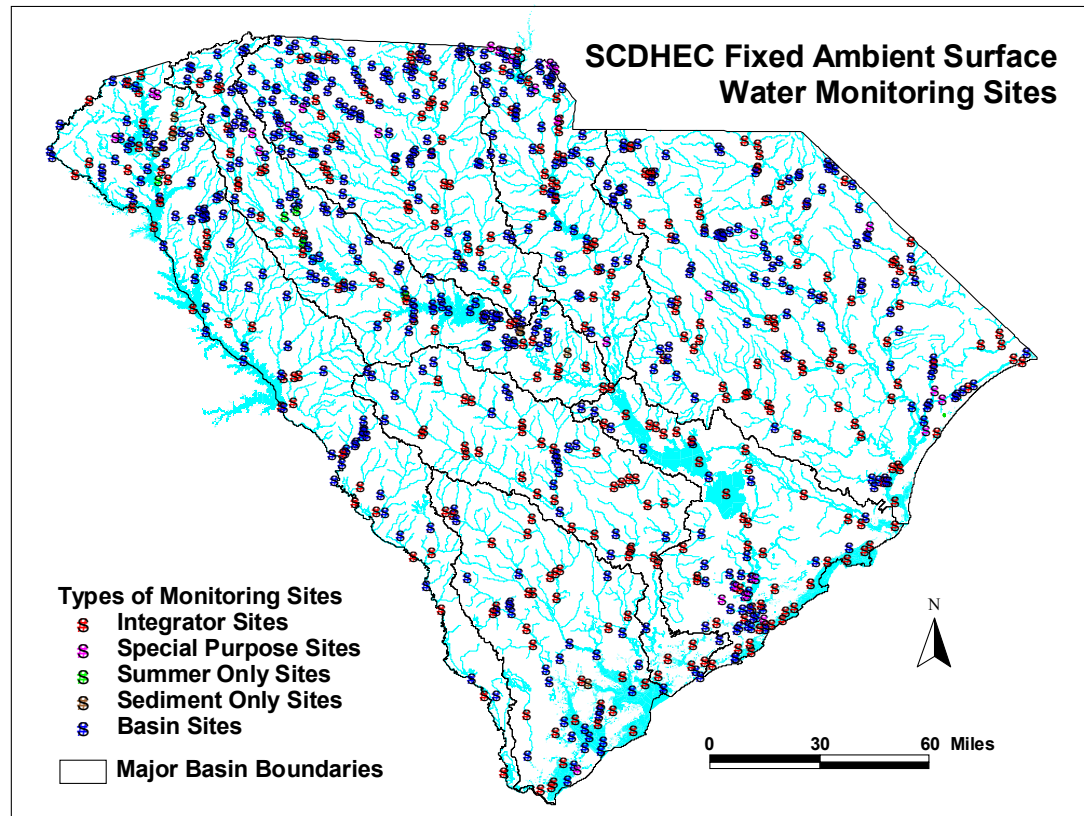
December 7, 2005

Andy Miller Watershed Manager

Saluda and Santee Basins



State's Ambient Water Quality Monitoring Network

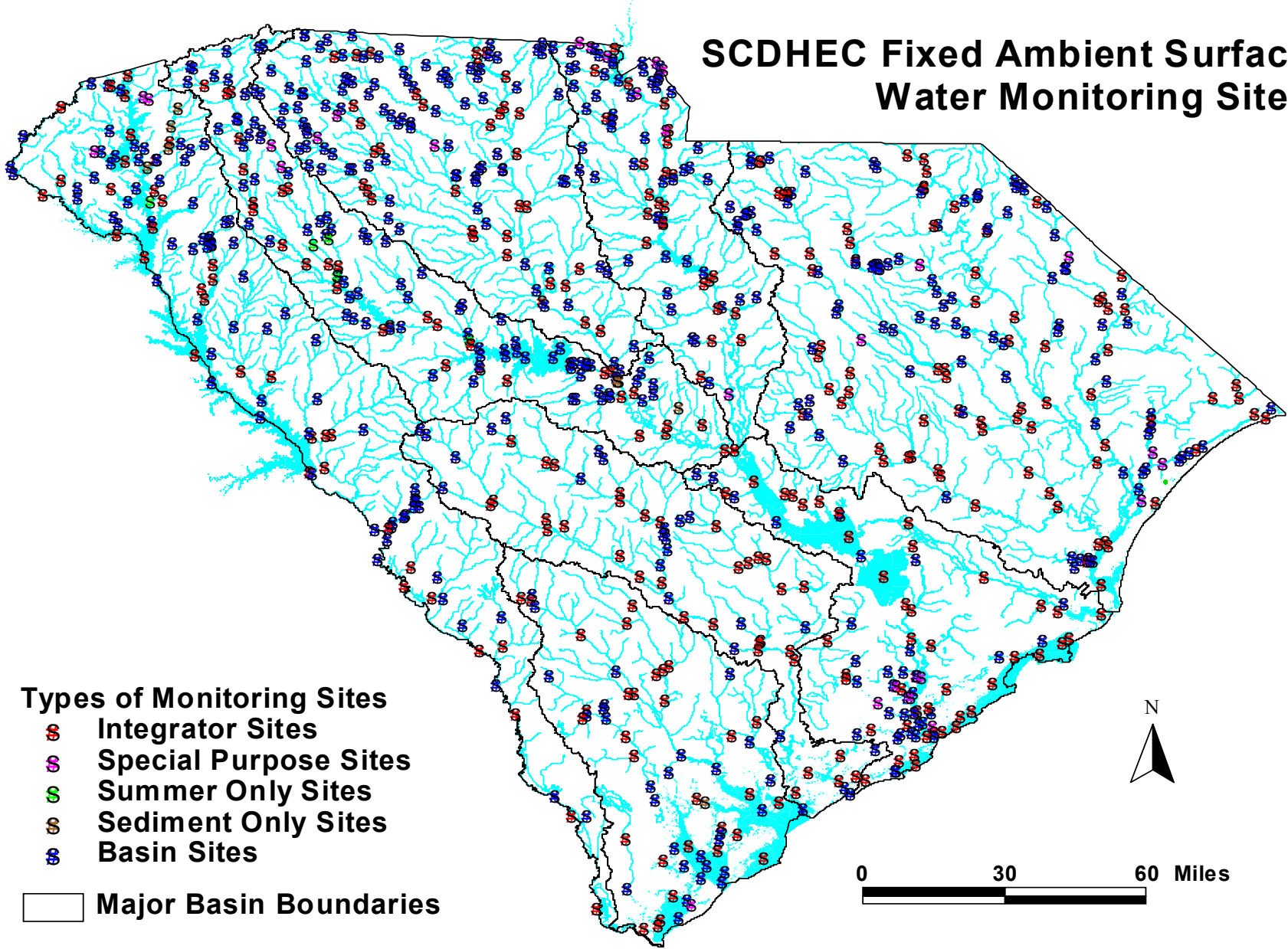


State's Ambient Water Quality Monitoring Network

- 1400 Stations State-wide
- 212,000 Water Quality Tests
 - Sampled by Regional Env. Quality Control Region Staff
 - Analysis at:
 - Field
 - Regional Labs
 - Central Lab-Parklane Rd Columbia



SCDHEC Fixed Ambient Surface Water Monitoring Sites



Types of Monitoring Sites

- Integrator Sites
- Special Purpose Sites
- Summer Only Sites
- Sediment Only Sites
- Basin Sites

Major Basin Boundaries

0 30 60 Miles



Lake Murray –Lower Saluda Sites

- 41 Total Sites

- 7 Integrator sites-Monthly every year
- 23 Basin sites-Monthly every five years
- 8 Random sites-Monthly for one year
- 2 Special purpose-Monthly as needed
- 1 Summer only



Lake Murray –Lower Saluda Sites

- 31 Lake Murray Watershed Sites
 - 18 Lake Sites
 - 14 Contributing watershed Stations
- 10 Lower Saluda Watershed Stations
 - 3 River stations
 - 7 Contributing watershed stations

Lower Saluda WQ Status '06

- 3 Sites meet criteria
 - S-152, S-298, S-149 Main stem of the L Saluda
- 7 Sites exceed criterion:
 - 6 fecal coliform
 - 4 aquatic macro invertebrates
 - 2 dissolved oxygen
 - 2 ph
 - 1 Mercury in fish tissue

New for '06:

S-149 Meets for FC

S-152 Meets for pH

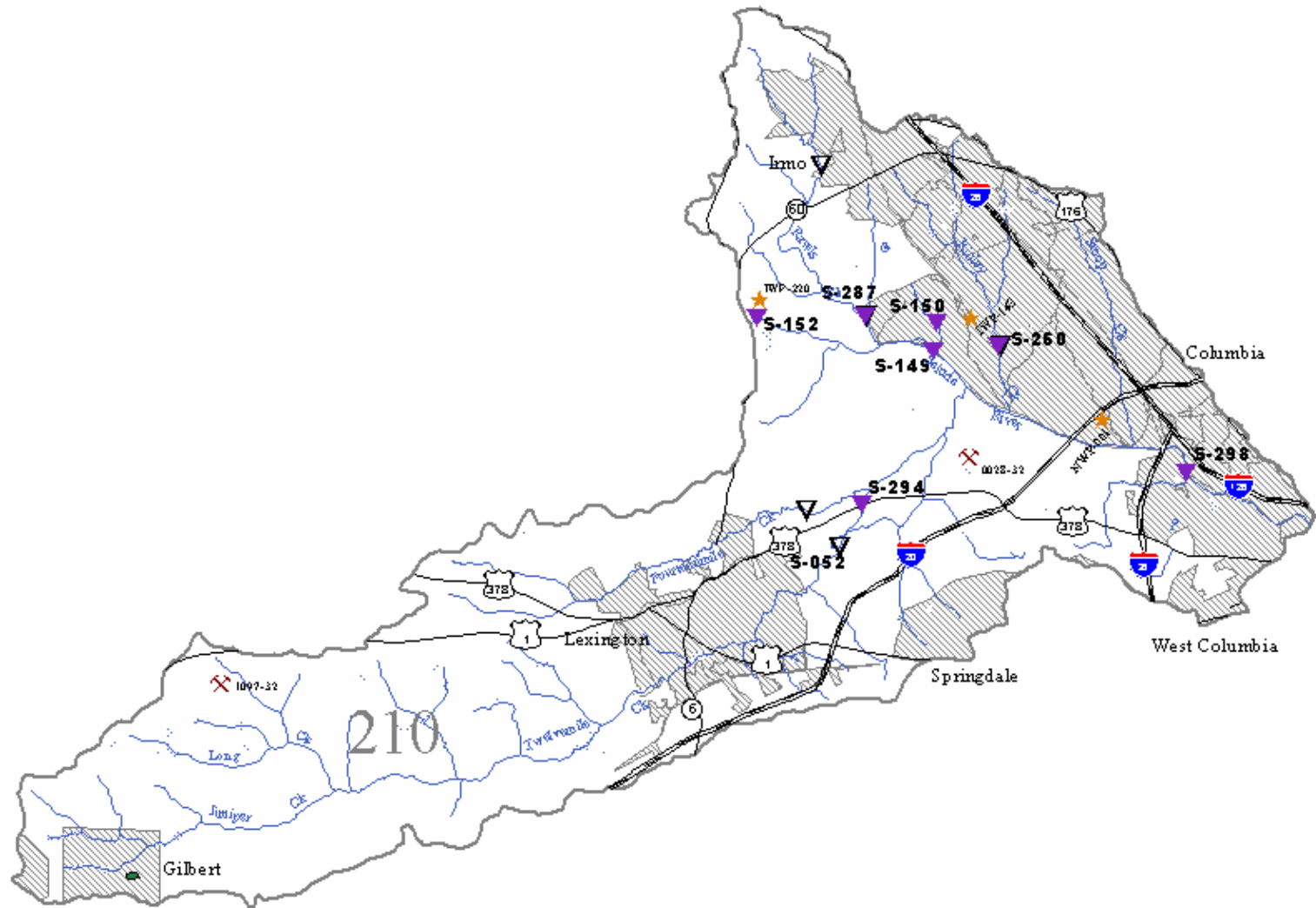
S-260 Exceeds for BIO

S-287 Exceeds for DO,pH

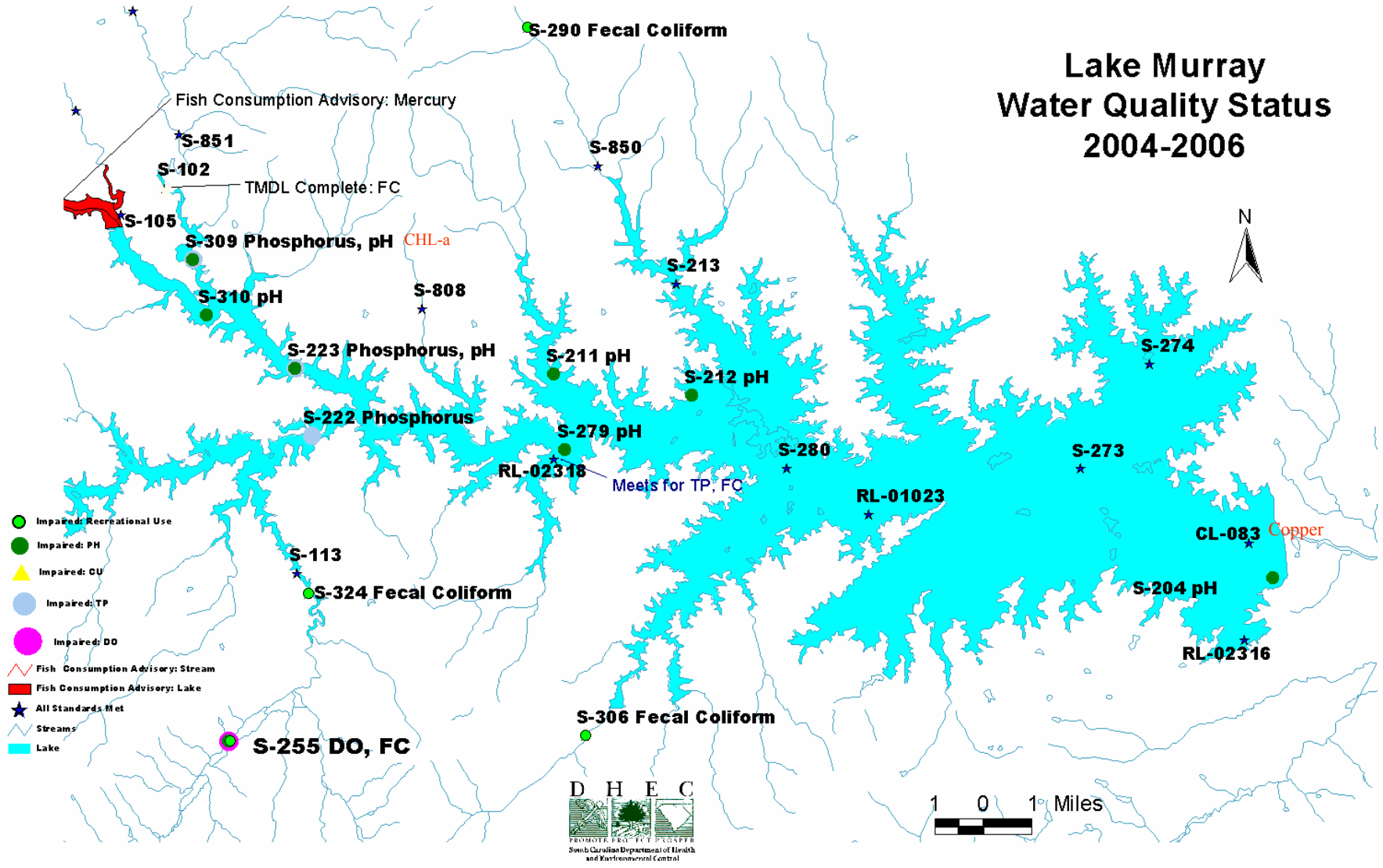
S-294 Exceeds for BIO,pH



Watershed Map Lower Saluda



Lake Murray Water Quality Status 2004-2006



Lake Murray: WQ Status '06

■ Lake Stations

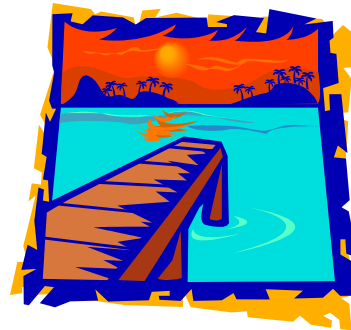
- 9 Meet criteria(Eastern Side of Lake)
- 10 Exceed criterion
 - 9 pH (High)
 - 2 Phosphorus
 - 1 Copper
 - 1 Chlorophyll-a

New for 06:

S-279 now meets for P, FC
S-309 exceeds for chl-a
CL-083 exceeds for copper

■ Watershed Stations

- 1 Meet criteria (Clouds Creek)
- 13 Exceed criterion
- 11 Fecal Coliform
 - 4 Dissolved Oxygen
 - 2 ph (low)
 - 1 Aquatic macro-invertebrates



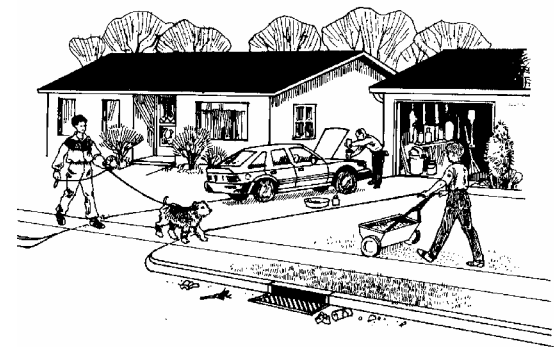
Sources

- Point

- Domestic wastewater treatment
- Industrial

- Nonpoint

- Urban
- Agricultural
- Atmospheric deposition



For further information

- SC list of Impaired Waters (303d list)
 - <http://www.scdhec.gov/water/tmdl/index.html#303d>
- South Carolina Surface Water Quality Program
 - <http://www.scdhec.gov/water/html/surface.html>

Call me:

- Andy Miller-Saluda-Santee Watershed manager
 - 803-898-4031

