

**SCE&G**  
**Lake Murray**  
**Public**  
**Recreation**  
**Sites**  
**February,**  
**2008**

# Existing & Future Recreation Sites

Park Site #1  
17.9 Acres  
2,271 Ft Shoreline  
340 Total Parking Spaces



Overflow  
Parking

Beach Area

Group Shelters &  
Picnic Tables

**Legend**

— PBL

**Type**

Public Recreation











# WELCOME TO SCE&G PUBLIC PARK

LAKE MURRAY-PROJECT 516

FOR INFORMATION CALL: 217-9221

PARKING FEES...CARS \$3.00 · MOTORCYCLES \$2.00 · BUSES \$5.00

SEASON PASS AVAILABLE FOR \$45.00 PER YEAR

## NOTICE

- NO LIFEGUARD ON DUTY
- SWIM AT OWN RISK

## ATENCIÓN

- NO HAY SALVAVIDAS
- NADEN A SU PROPIO RIESGO

## PARK HOURS

WEEKDAYS 11AM 8PM  
WEEKENDS 10AM 8PM

- SECURITY GUARD ON DUTY
- NO PETS ALLOWED
- NO ALCOHOLIC BEVERAGES ALLOWED

8 1:04 PM















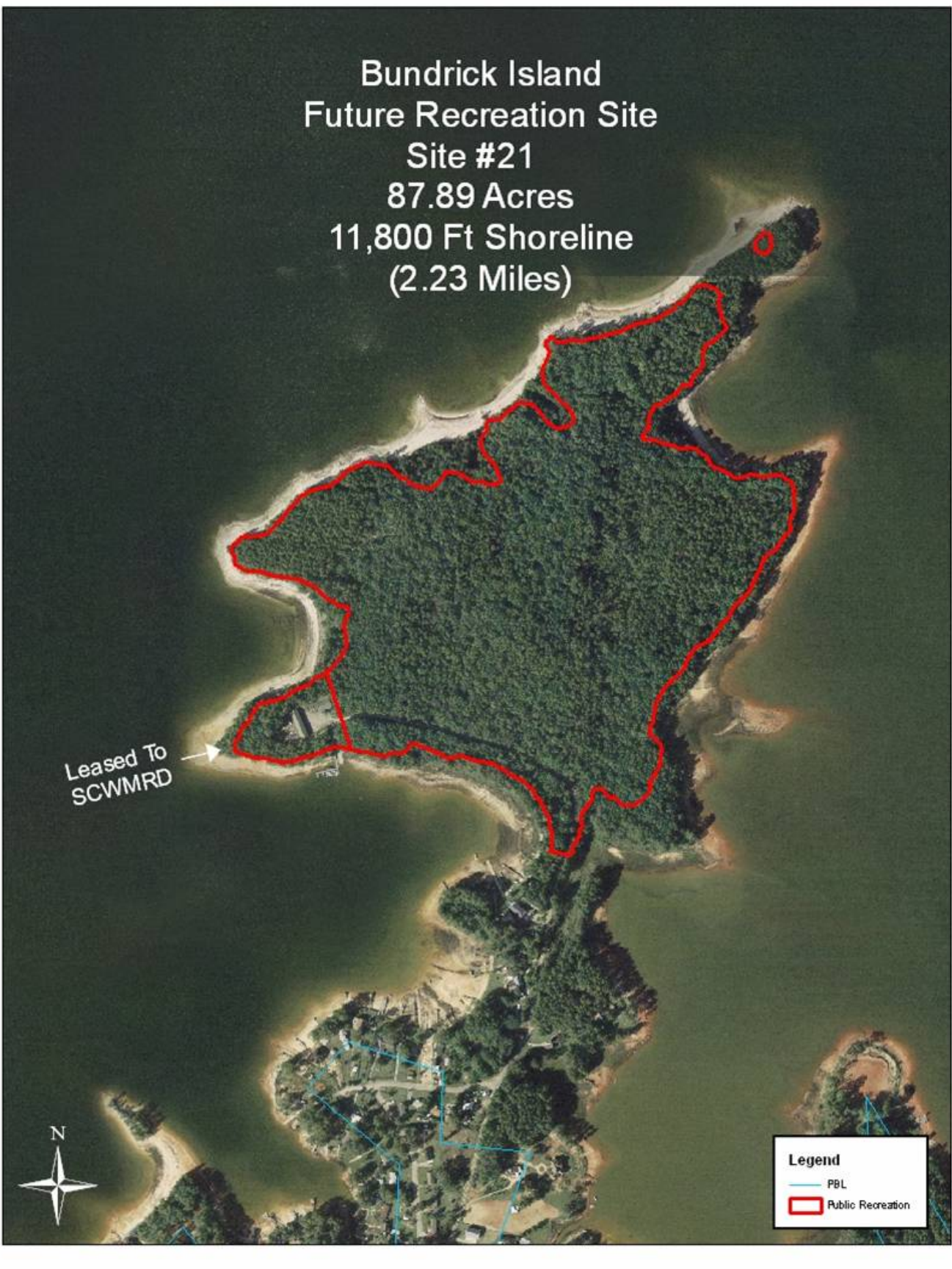
Bundrick Island  
Future Recreation Site  
Site #21  
87.89 Acres  
11,800 Ft Shoreline  
(2.23 Miles)

Leased To  
SCWMRD



**Legend**

- PBL
- Public Recreation





Shull Island  
Site #2 - 1.82 Acres  
434 Ft Shoreline

Shull Island  
Site #2B  
.36 Acres  
115.5 Ft Shoreline

Courtesy Dock



Boat Ramp



Parking Spaces = 64

Parking  
Spaces = 5

Boat Ramp



Legend

FBL

Public Recreation











# PARK RULES

**NO**

CAMPING  
SWIMMING  
LOITERING  
ALCOHOL  
EXCESSIVE NOISE

BOATS HAVE PRIORITY  
ON RAMPS AND DOCKS

---

THIS PARK IS UNDER  
JURISDICTION OF THE  
LEXINGTON COUNTY  
SHERIFF'S DEPARTMENT



NOV 30 2007

UNLAWFUL  
TO OBSTRUCT  
RAMP (OR) DOCK  
ACCESS AREA  
TOWING ENFORCED  
FINES UP TO \$100  
S.C. CODE SSC. 50-21-148

**NOTICE**  
NO LIFEGUARD  
ON DUTY  
*SWIM AT OWN RISK*  
**ATENCIÓN**  
NO HAY  
SALVAVIDAS  
*NADEN A SU PROPIO RIESGO*

OCT 20 2006







NOV 30 2007





Shull Island  
Site #2A  
22.4 Acres

Proposed  
Future  
Recreation  
+/- 5.5 Acres



**Legend**  
— PBL





Murray Shores  
Site #3  
1.61 Acres  
1,016 Ft Shoreline

Parking Spaces = 30

Courtesy Dock  
Boat Ramp

**Legend**  
— PBL  
▭ Public Recreation





WELCOME  
TO  
**Murray Shores**  
OWNED AND OPERATED BY  
**SOUTH CAROLINA  
ELECTRIC & GAS CO.**  
*Recreation Facilities Open to Public*  
FOR INFORMATION CALL 748-3007  
GENERAL TRENT  
RECREATION DEVELOPMENT  
PROJECTS

**PARK CLOSES  
AT SUNDOWN  
EXCEPT FOR  
BOATERS**  
*This Property is Under The Jurisdiction  
Of The Beaufort County Sheriff Department.*

NOV 30 2007





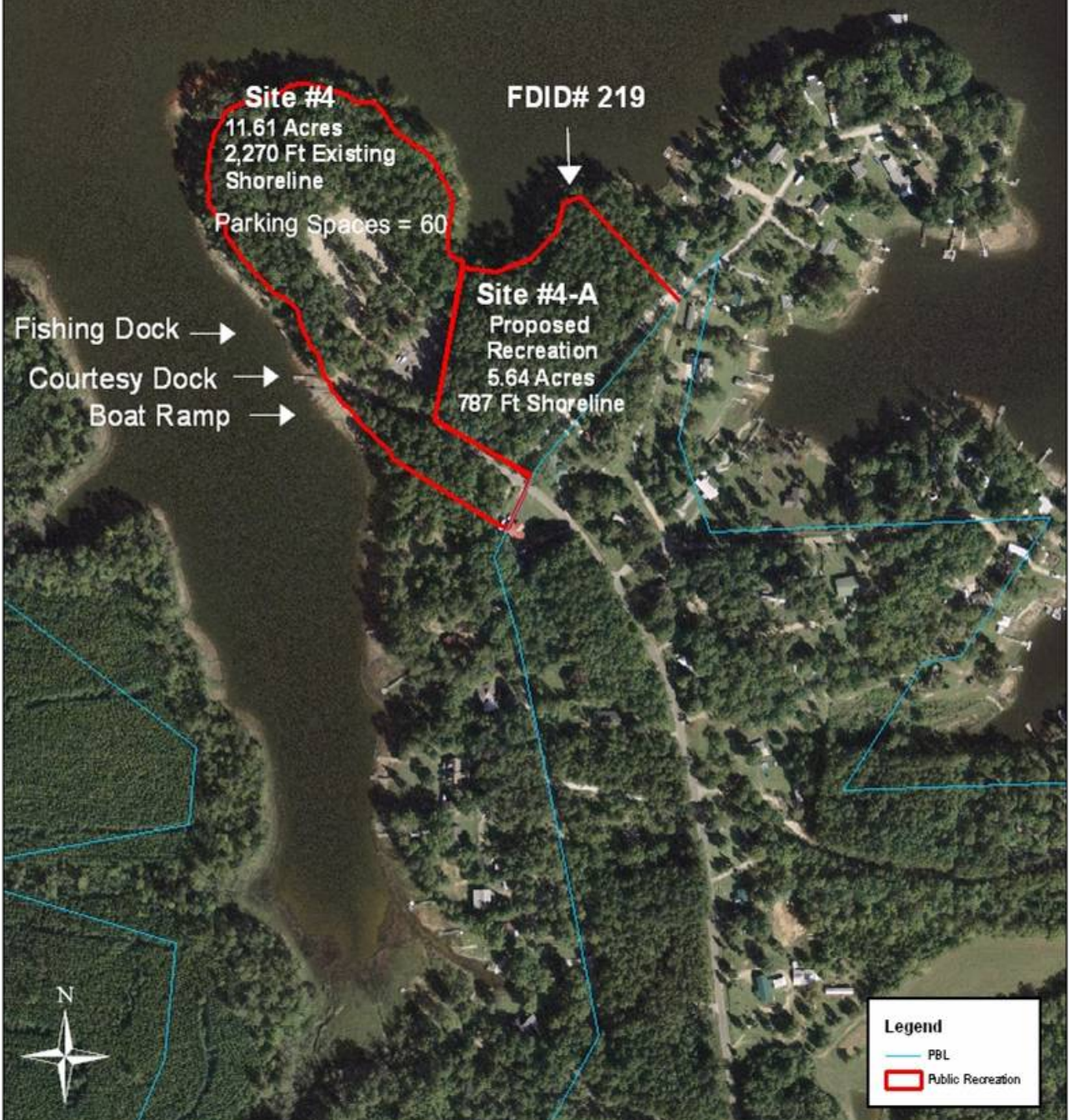






NOV 30 2007

# River Bend Site #4 & #4-A







NOV 30 2007























# Little Saluda Point Future Recreation Site Site #20

Existing Recreation Site  
15.41 Acres  
3,765 Ft Shoreline



Proposed Recreation Site  
14.18 Acres  
1,147 Ft Shoreline



FDID# 220



**Legend**

- PBL
- Public Recreation





**Clouds Creek  
Future Recreation  
Site #18  
3.04 Acres  
943 Ft Shoreline**



**Legend**

-  PBL
-  Public Recreation



Lake Murray Estates  
Site #22  
7.65 Acres  
910 Ft Shoreline

Fishing Dock

Courtesy Dock

Boat Ramp

**Legend**

- PBL
- Public Recreation





**PARK CLOSES  
AT SUNDOWN  
EXCEPT FOR  
BOATERS**

*This Property Is Under The Jurisdiction  
Of The Saluda County Sheriff Department.*

**NOTICE**

**NO LIFEGUARD  
ON DUTY**

*SWIM AT OWN RISK*





NOV 30 2007











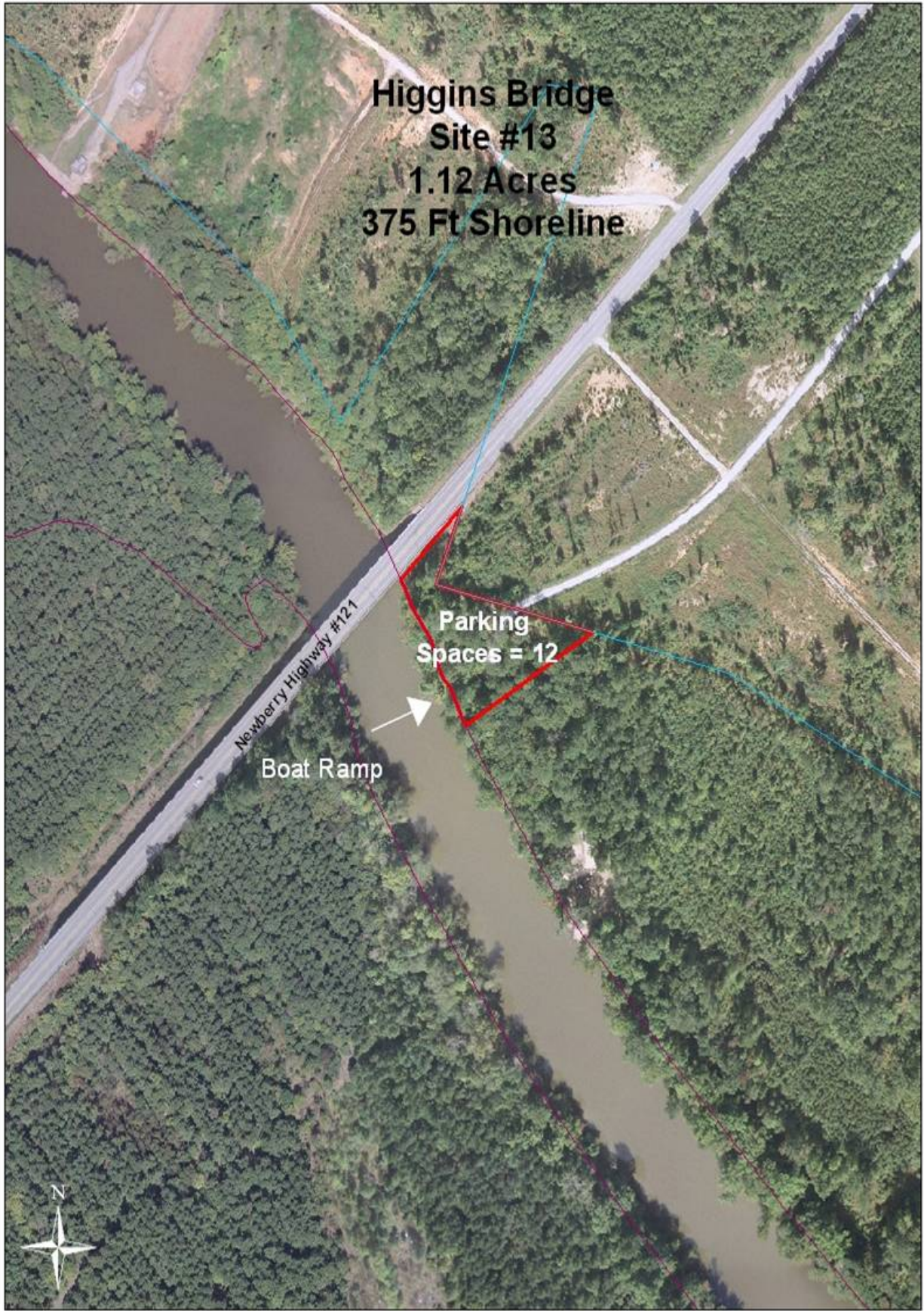


**Higgins Bridge  
Site #13  
1.12 Acres  
375 Ft Shoreline**

**Parking  
Spaces = 12**

**Boat Ramp**

Newberry Highway #121













**Kempsons Bridge  
Site #14  
2.93 Acres  
600 Ft Shoreline**

Kempsons Bridge Rd

Fishing Dock →

Courtesy Dock →

Boat Ramp →

Parking Spaces = 20

Back Property



**Legend**

- PBL
- Type
- Public Recreation
- WorkZone5.sid
- RGB
- Red: Band\_1
- Green: Band\_2
- Blue: Band\_3

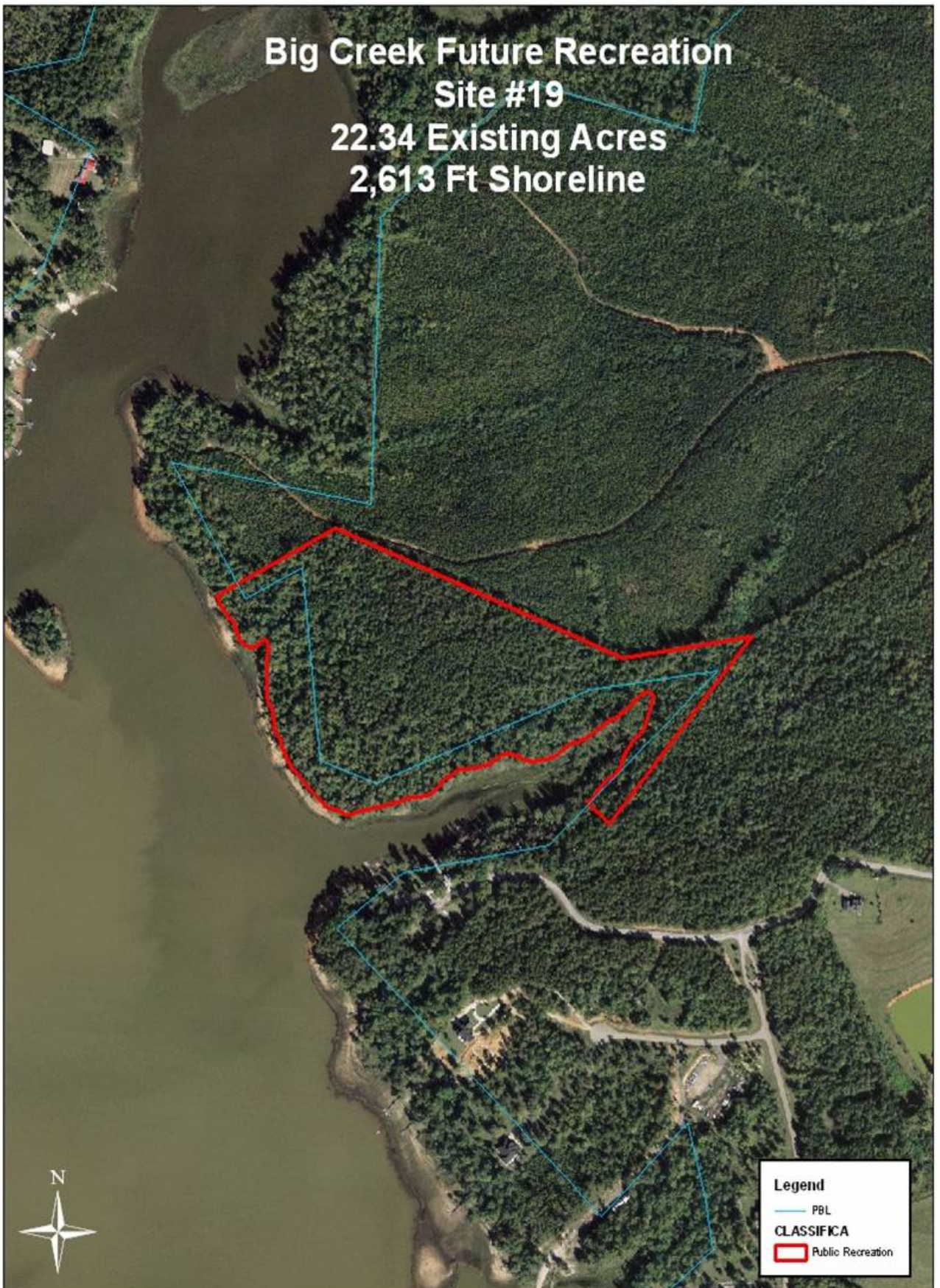








**Big Creek Future Recreation  
Site #19  
22.34 Existing Acres  
2,613 Ft Shoreline**



**Legend**  
— PBL  
**CLASSIFICA**  
Public Recreation



Simpsons Ferry Future Recreation  
Site #5A  
11.58 Acres  
3,247 Ft Shoreline



Currently Leased

Legend

- PBL
- Public Recreation



Sunset Park  
Site #5  
2.28 Acres  
640 Existing Ft Shoreline  
2,300 Proposed Ft Shoreline

Courtesy Dock

Parking  
Spaces = 30

Boat Ramp

Fishing Dock

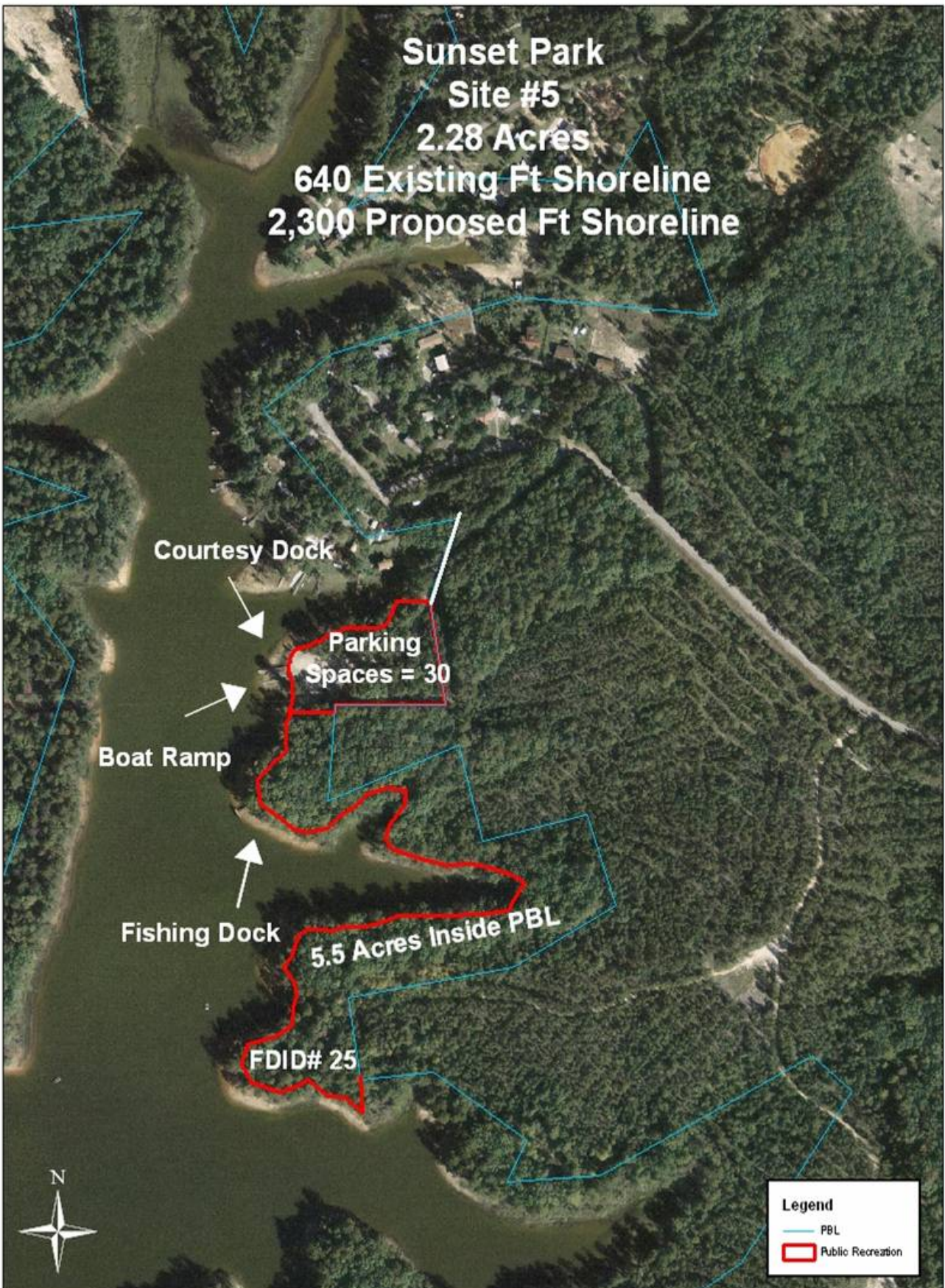
5.5 Acres Inside PBL

FDID# 25



**Legend**

- PBL
- Public Recreation







NOV 29 2007

WELCOME TO  
Sunset Recreation Area

Park Rules

1. Park Hours - Sunset to Sunset
2. No Alcoholic Beverages or Illegal Drugs Allowed
3. No Littering
4. No Fire Except on Day
5. Park Open Only to Fishermen and Campers After Dark
6. Primitive Camping in Designated Areas Only
7. No Open Fires
8. No Loud or Abused Language

This facility is under the jurisdiction of the  
Newberry County Board of Commissioners and  
South Carolina Department of Natural Resources











Macedoina  
Site #12  
4.83 Acres  
2,491 Ft Shoreline

**Legend**

- PBL
- Public Recreation











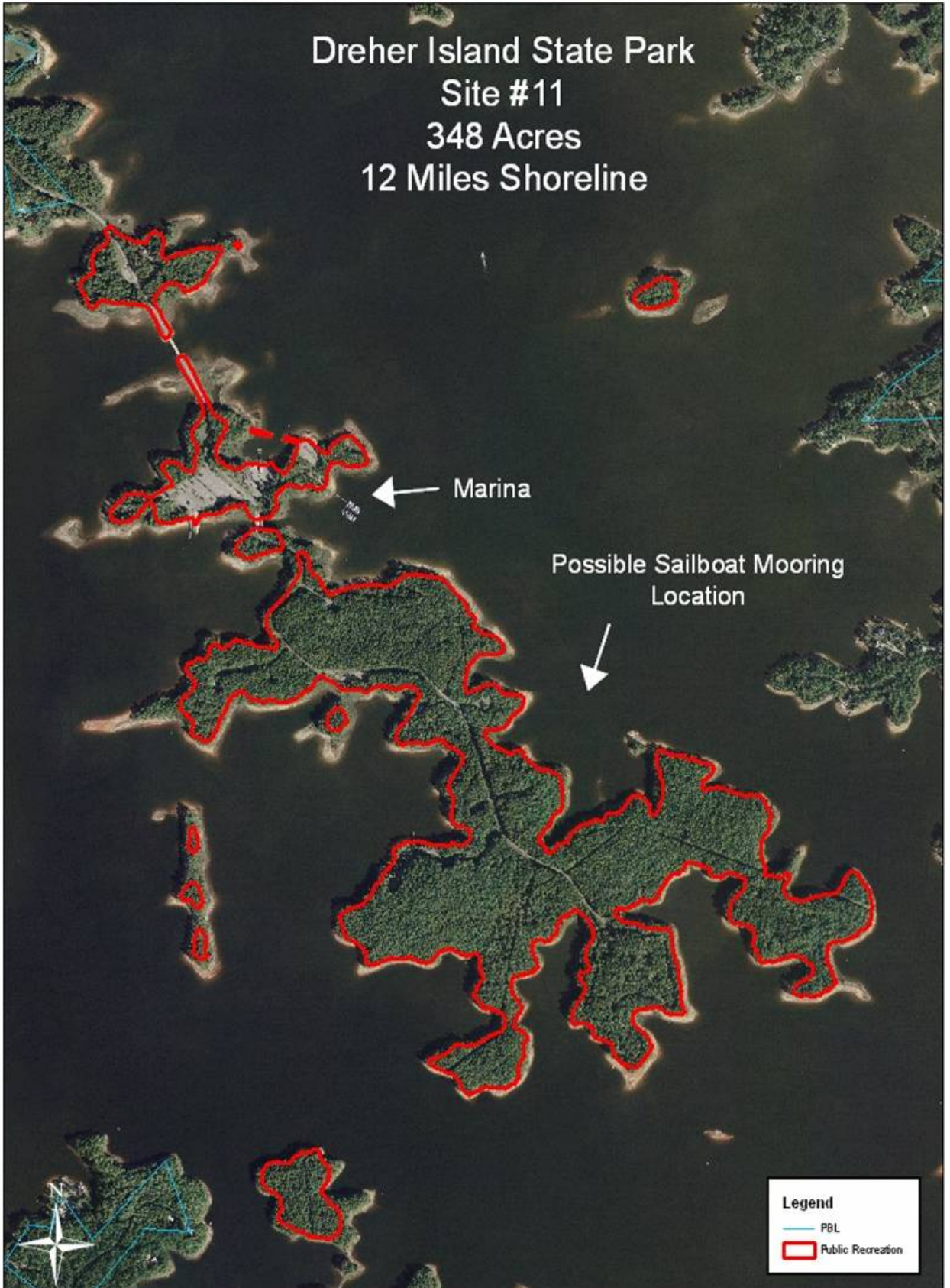
Dreher Island State Park  
Site #11  
348 Acres  
12 Miles Shoreline

Marina

Possible Sailboat Mooring  
Location

Legend

- PBL
- Public Recreation



# DREHER ISLAND



## STATE RECREATION AREA

S.C. DEPT. OF PARKS, RECREATION AND TOURISM

JAN 18 2008





**ADMISSION FEE**  
\$2.00 PER PERSON  
AGES 15 & UNDER - FREE  
ANNUAL PASS - \$50.00

**FEE REQUIRED**  
ALL VEHICLES MUST  
DISPLAY A VALID PASS

If you are visiting for the day  
at South Carolina State Park, please  
display your Annual Park Passport  
on your vehicle.  
A National Passport also works.

If you are an overnight guest,  
a State Pass (issued upon registration)  
will automatically be installed on the car  
and used to support the operation and  
maintenance of the park.

Thank you for enjoying the U.S. State Park System.

Your Park Admission Fees Help Make Life-Long Memories

The South Carolina State Park System depends on your fees to support almost 70% of the operating costs for the parks. The workers who make today are made possible through your continued financial support. Thank you!

JAN 17 2008





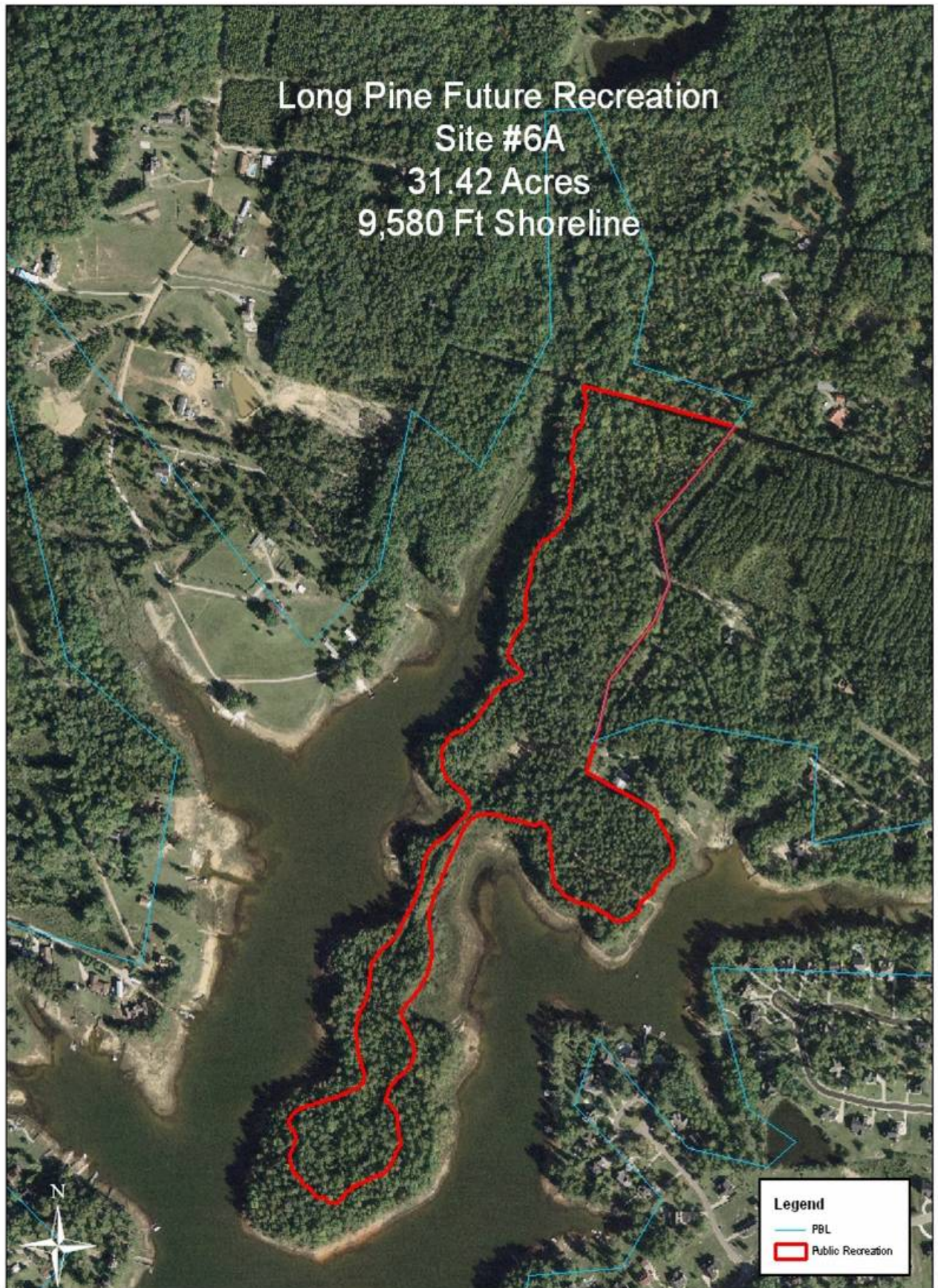


NOV 29 2007





Long Pine Future Recreation  
Site #6A  
31.42 Acres  
9,580 Ft Shoreline





**Rocky Point  
Site #6  
1.73 Acres  
258 Ft Shoreline**

**Boat Ramp**



**Parking  
Spaces = 10**



**Legend**

-  PBL
-  Public Recreation









NOV 29 2007

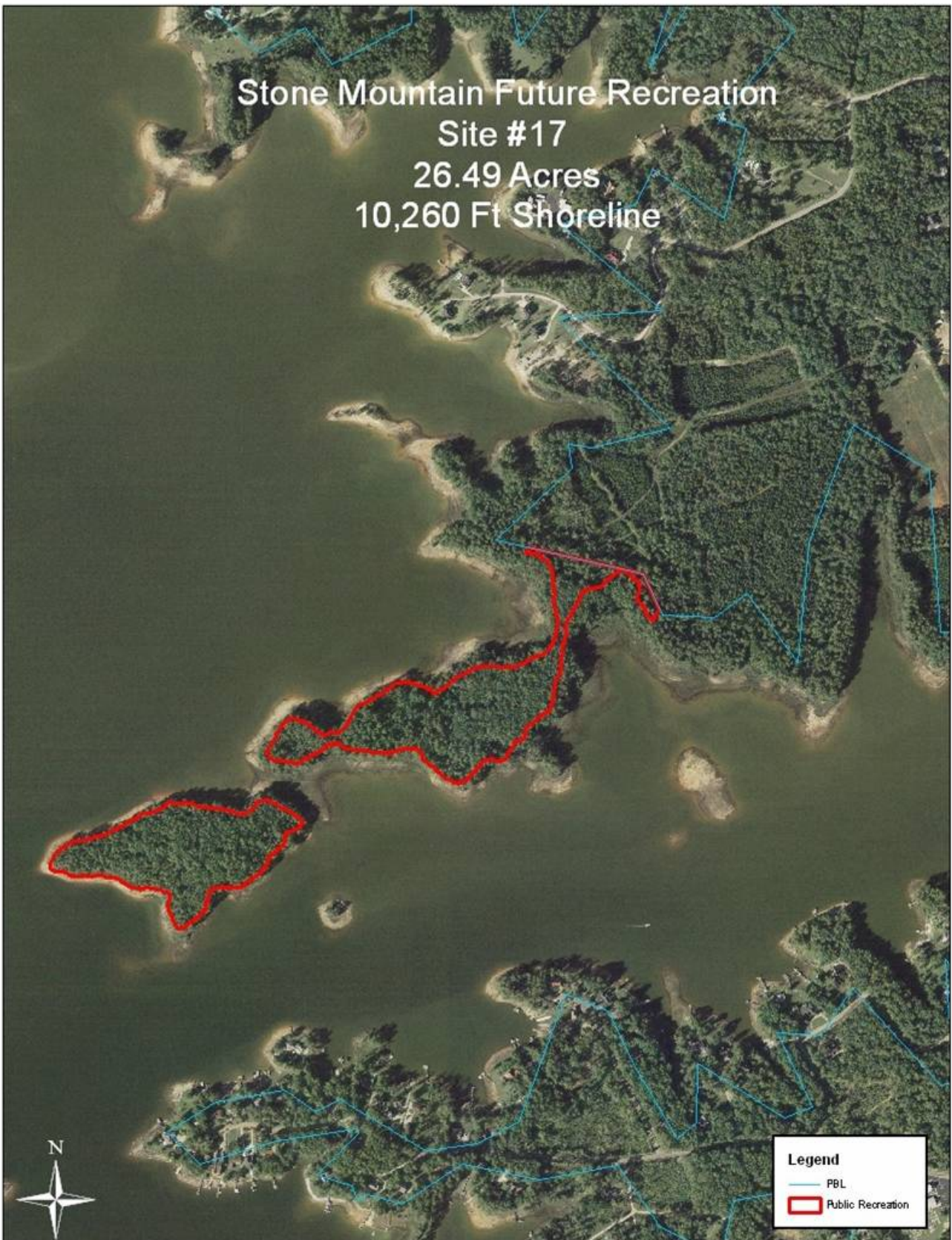




NOV 29 2007



Stone Mountain Future Recreation  
Site #17  
26.49 Acres  
10,260 Ft Shoreline



**Legend**

- PBL
- Public Recreation



Hilton Park  
Site #7  
4.36 Acres  
1,219 Ft Shoreline

Parking Spaces = 45

Fishing Pier

Courtesy Dock

Boat Ramp

Legend

PBL

Public Recreation











NO POLYMER TANKS  
OR CANNAGE PERMITTED  
VIOLATORS WILL BE  
PROSECUTED

NOV 29 2007











Hilton Park Future Recreation  
Site #7A  
27.86 Acres  
1,755 Ft Shoreline



**Legend**

- PBL
- Public Recreation



Water Treatment Plant  
Future Site #16  
4.3 Acres  
1,429 Ft Shoreline



**Legend**

- PBL
- ▭ Public Recreation



Park Site #8  
6.83 Acres  
1,388 Ft Shoreline

Courtesy Dock →



Boat Ramp →

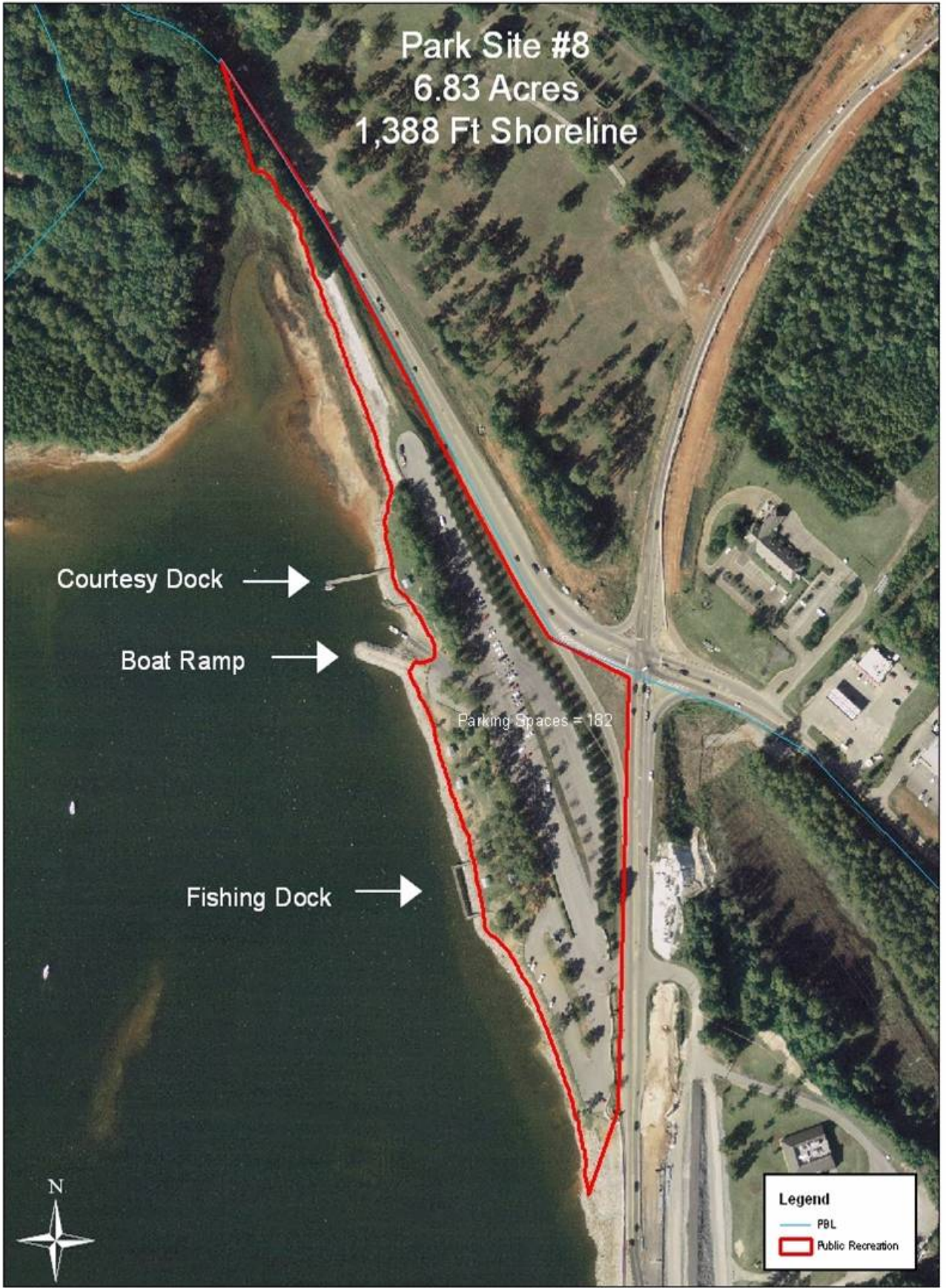
Fishing Dock →

Parking Spaces = 182



**Legend**

-  PBL
-  Public Recreation





NOV 30 2007













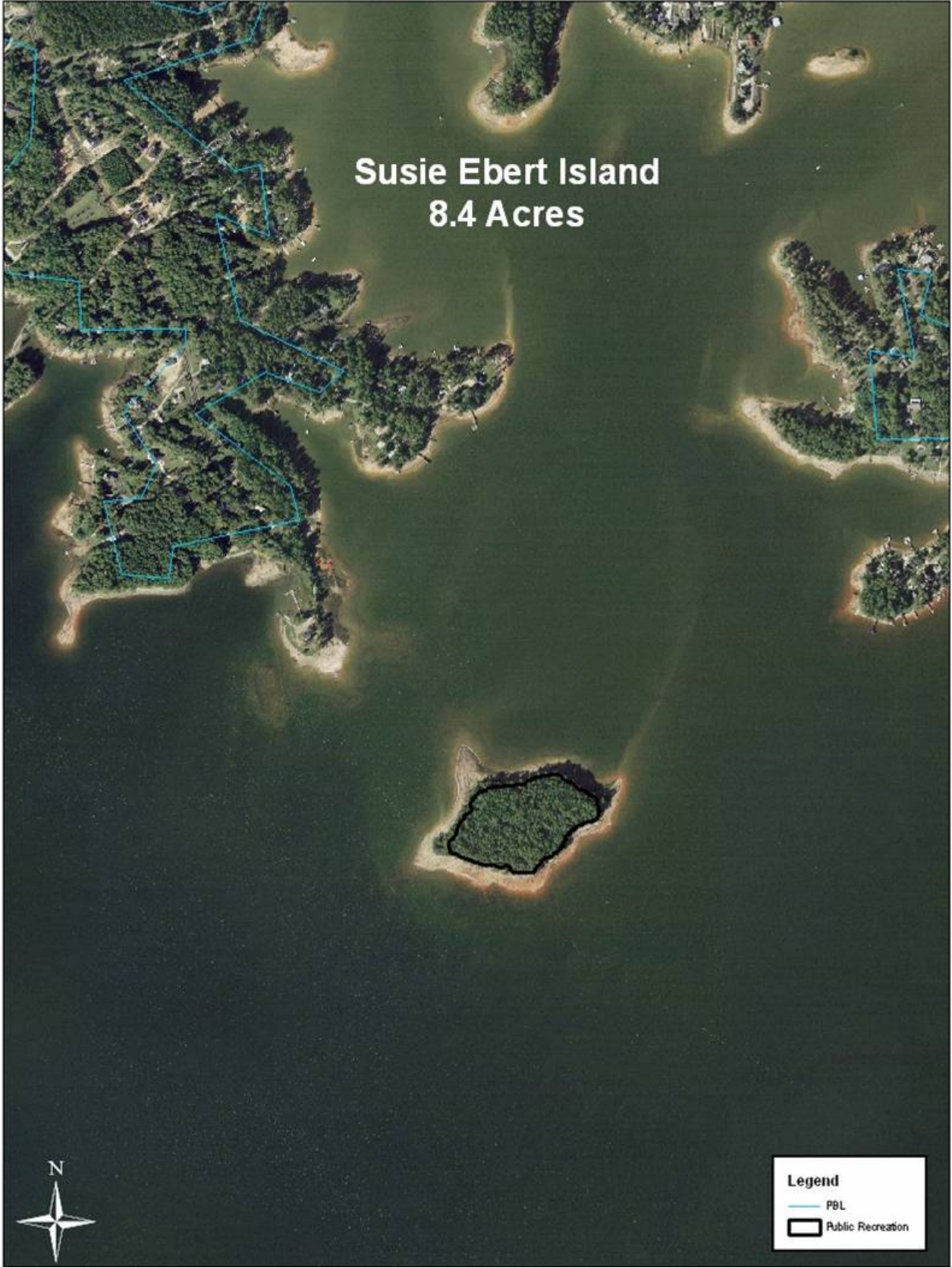


# Susie Ebert Island 8.4 Acres



**Legend**

-  PBL
-  Public Recreation



Wessinger Island  
35.7 Acres



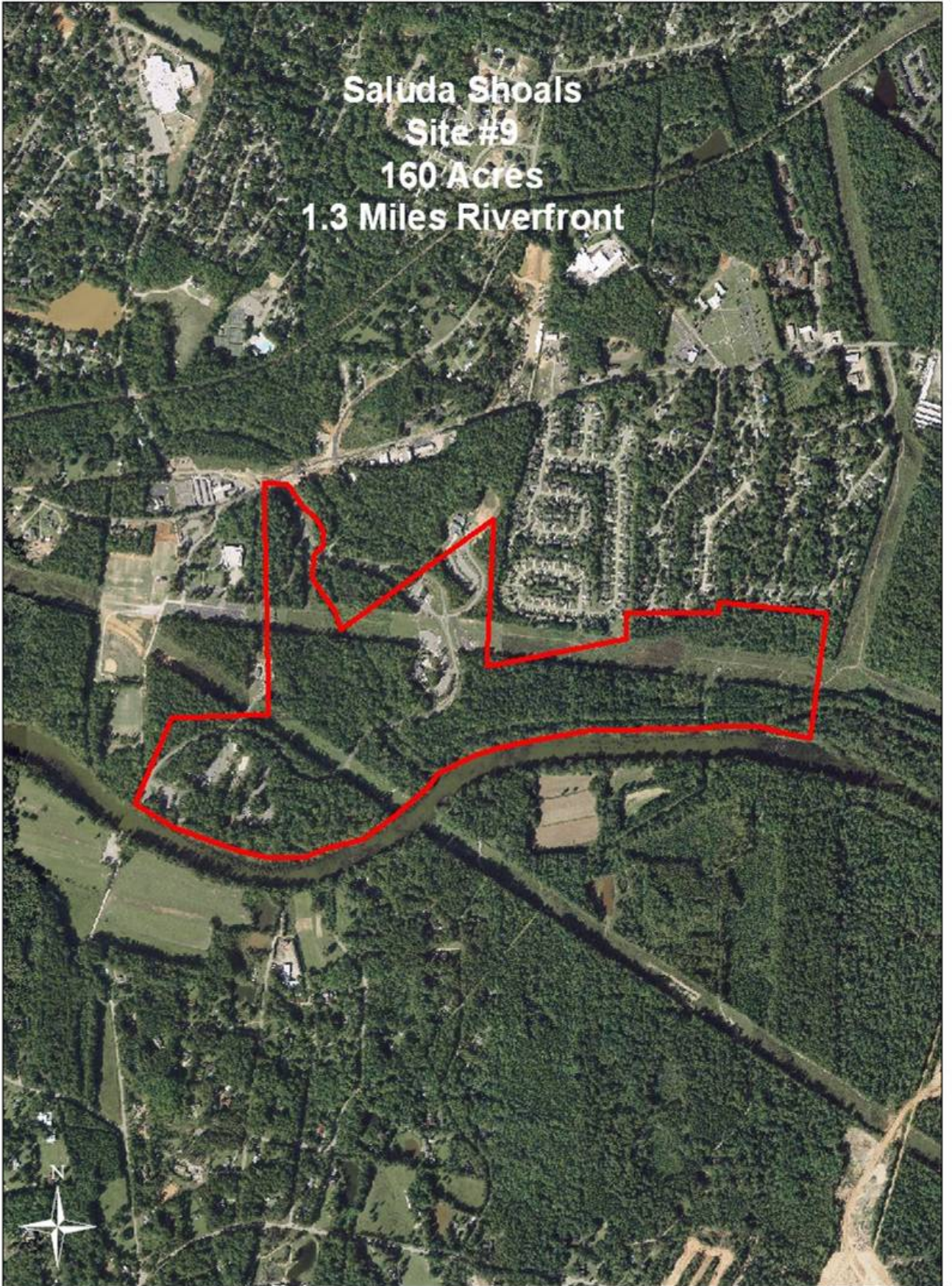
Legend

PBL

Public Recreation



**Saluda Shoals  
Site #9  
160 Acres  
1.3 Miles Riverfront**



























Boat Ramp

Metts Landing  
Canoe Portage  
Site #10  
1 Acre  
150 Ft Shoreline

**Legend**

- PBL
- Public Recreation















Saluda River - Gardendale  
Canoe Portage  
Site #15  
4.65 Acres  
210 Ft Shoreline

Back Property

Back Property

Canoe Portage



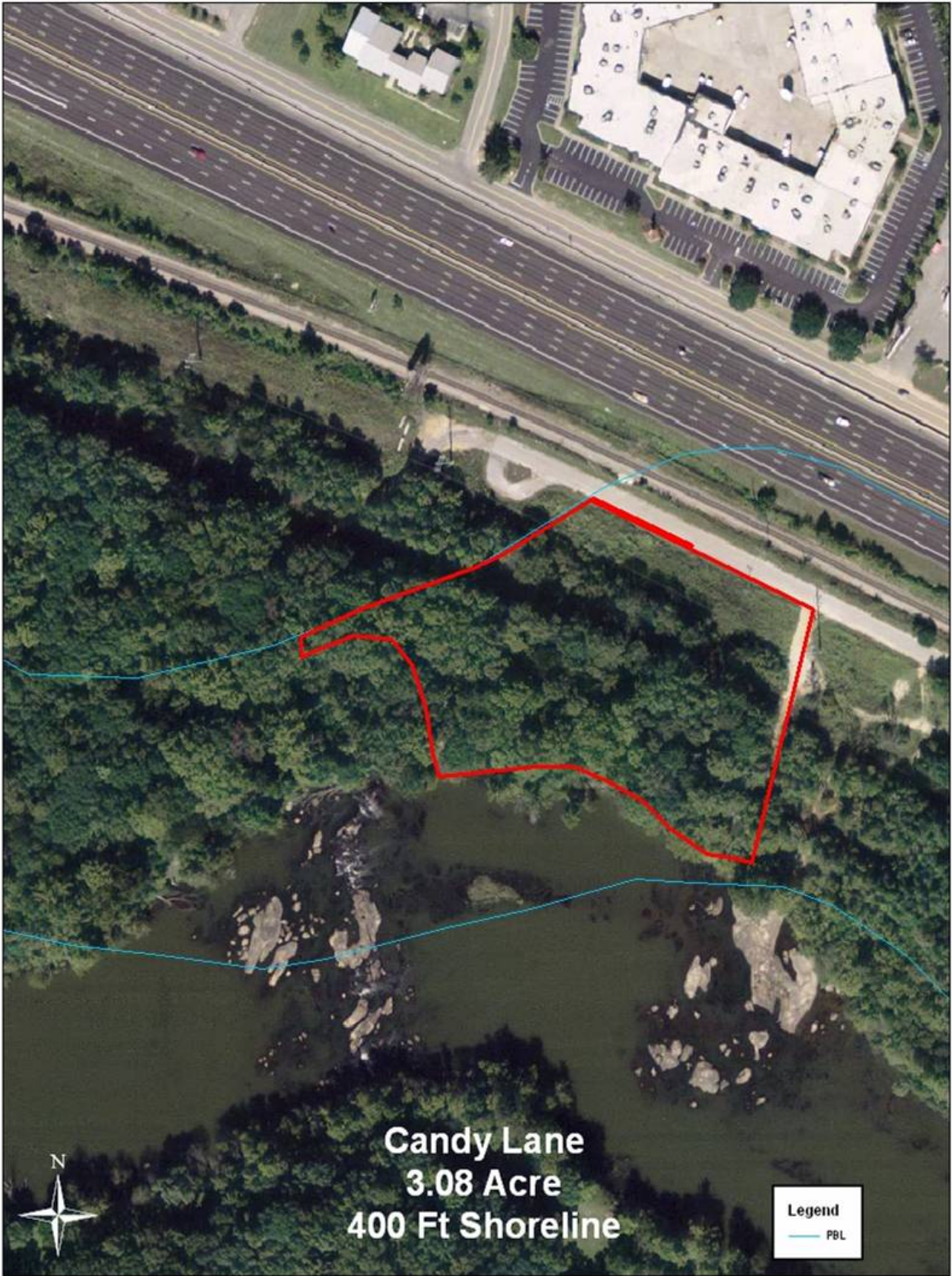
**Legend**

-  PBL
-  Public Recreation





**Additional  
Proposed  
Future  
Recreation  
Sites**



**Candy Lane**  
**3.08 Acre**  
**400 Ft Shoreline**



**Legend**  
— PBL

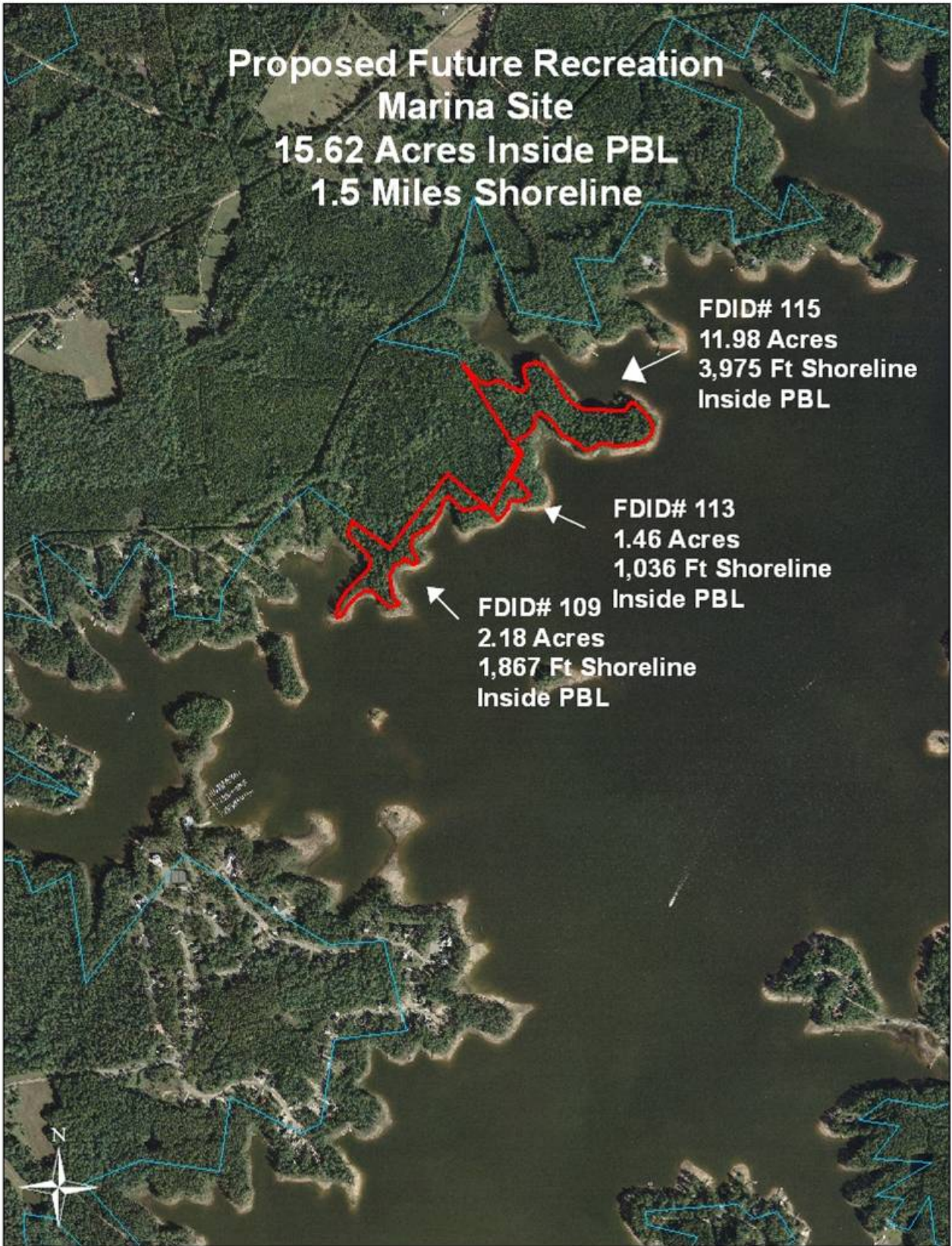


**Proposed Future Recreation  
Marina Site  
15.62 Acres Inside PBL  
1.5 Miles Shoreline**

**FDID# 115  
11.98 Acres  
3,975 Ft Shoreline  
Inside PBL**

**FDID# 113  
1.46 Acres  
1,036 Ft Shoreline  
Inside PBL**

**FDID# 109  
2.18 Acres  
1,867 Ft Shoreline  
Inside PBL**





# Proposed Future Recreation Shealy Point



**Back Property**  
3.2 Acres  
Outside PBL

**Eagle Nest**

**FDID# 165**  
17.05 Acres  
2,109 Ft Shoreline  
Inside PBL

**FDID# 171**  
19.86 Acres  
5,859 Ft Shoreline  
Inside PBL





# Little Saluda Point Future Recreation Site Site #20

Existing Recreation Site  
15.41 Acres  
3,765 Ft Shoreline



Proposed Recreation Site  
14.18 Acres  
1,147 Ft Shoreline



FDID# 220



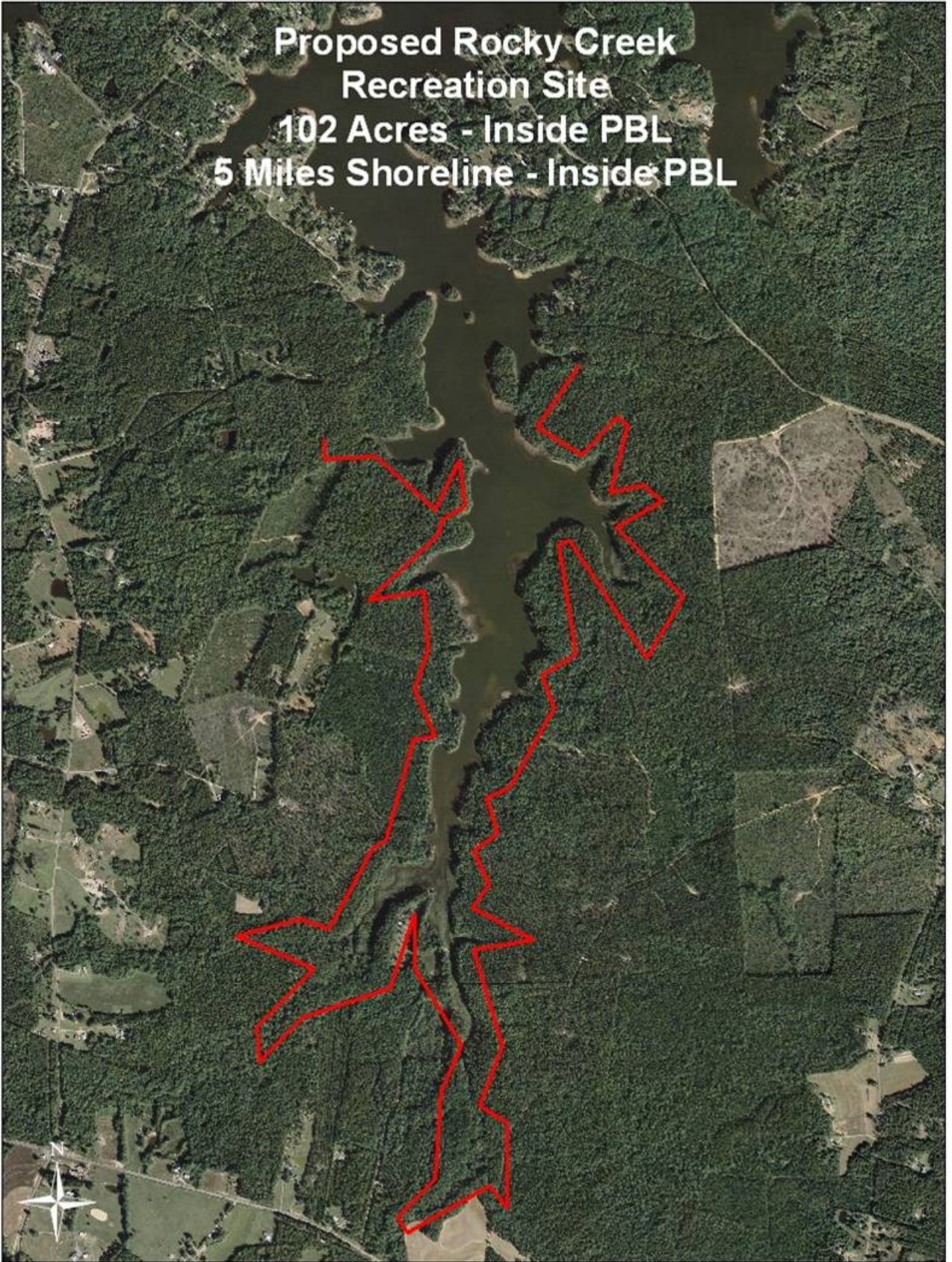
**Legend**

- PBL
- Public Recreation



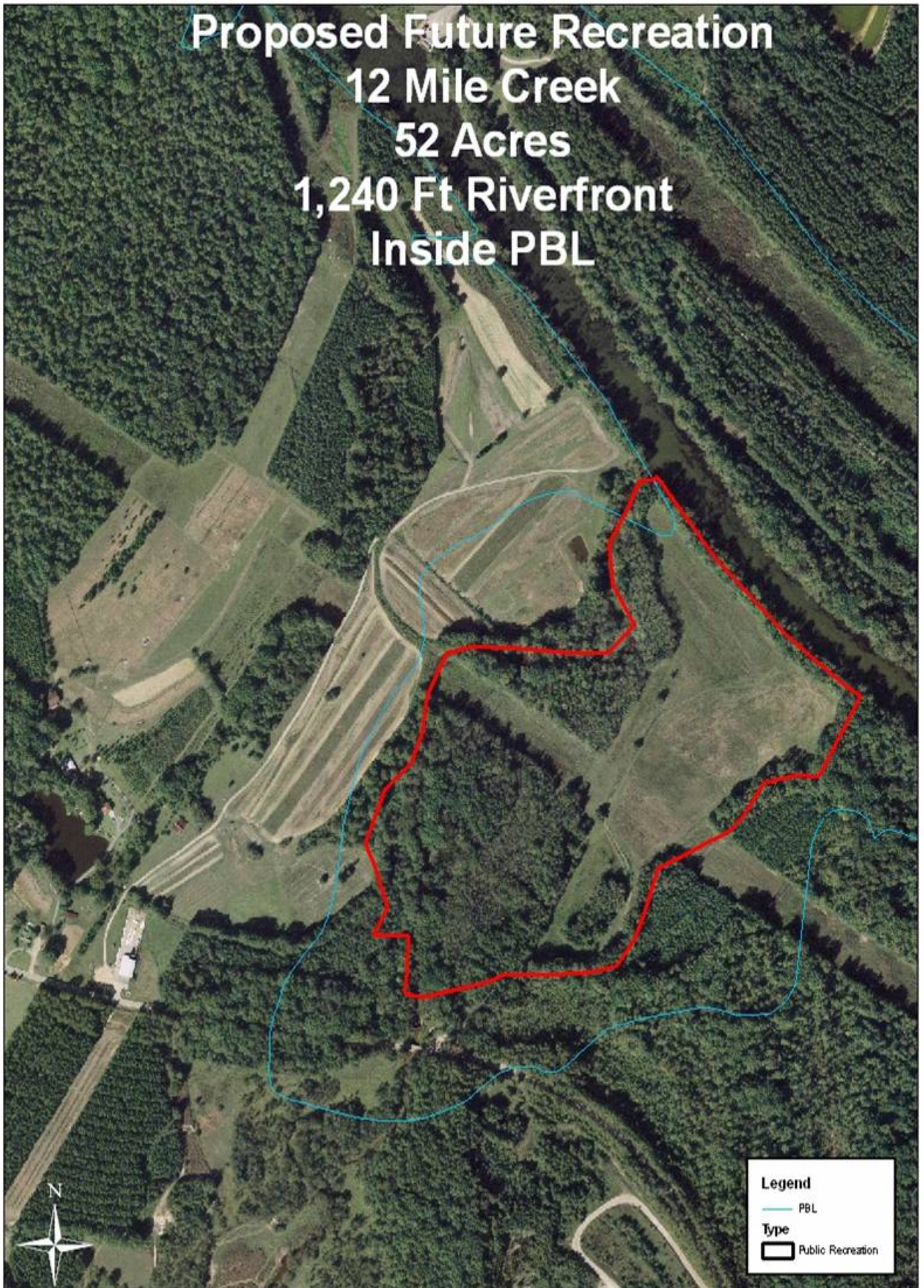


**Proposed Rocky Creek  
Recreation Site  
102 Acres - Inside PBL  
5 Miles Shoreline - Inside PBL**





**Proposed Future Recreation  
12 Mile Creek  
52 Acres  
1,240 Ft Riverfront  
Inside PBL**

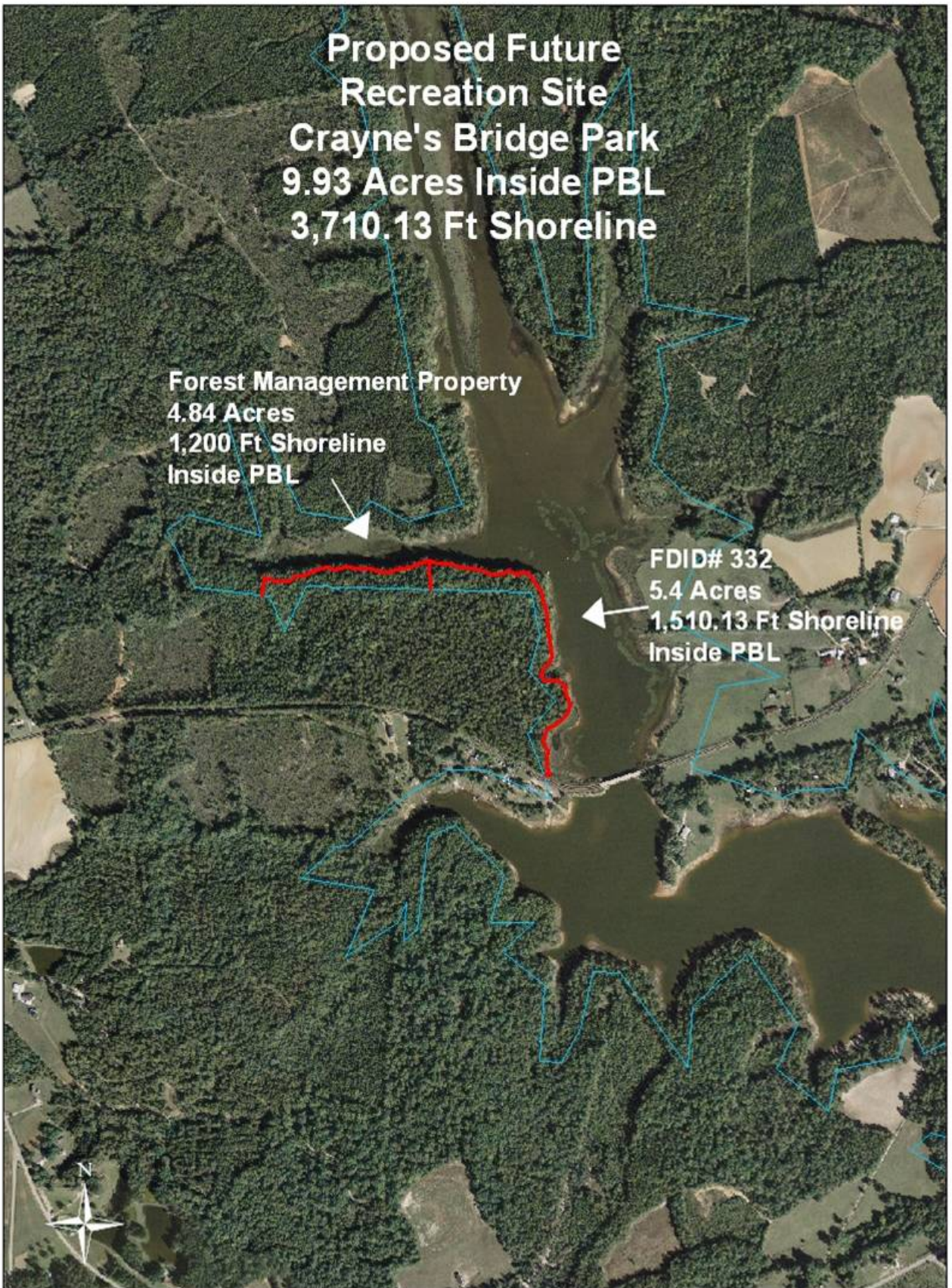




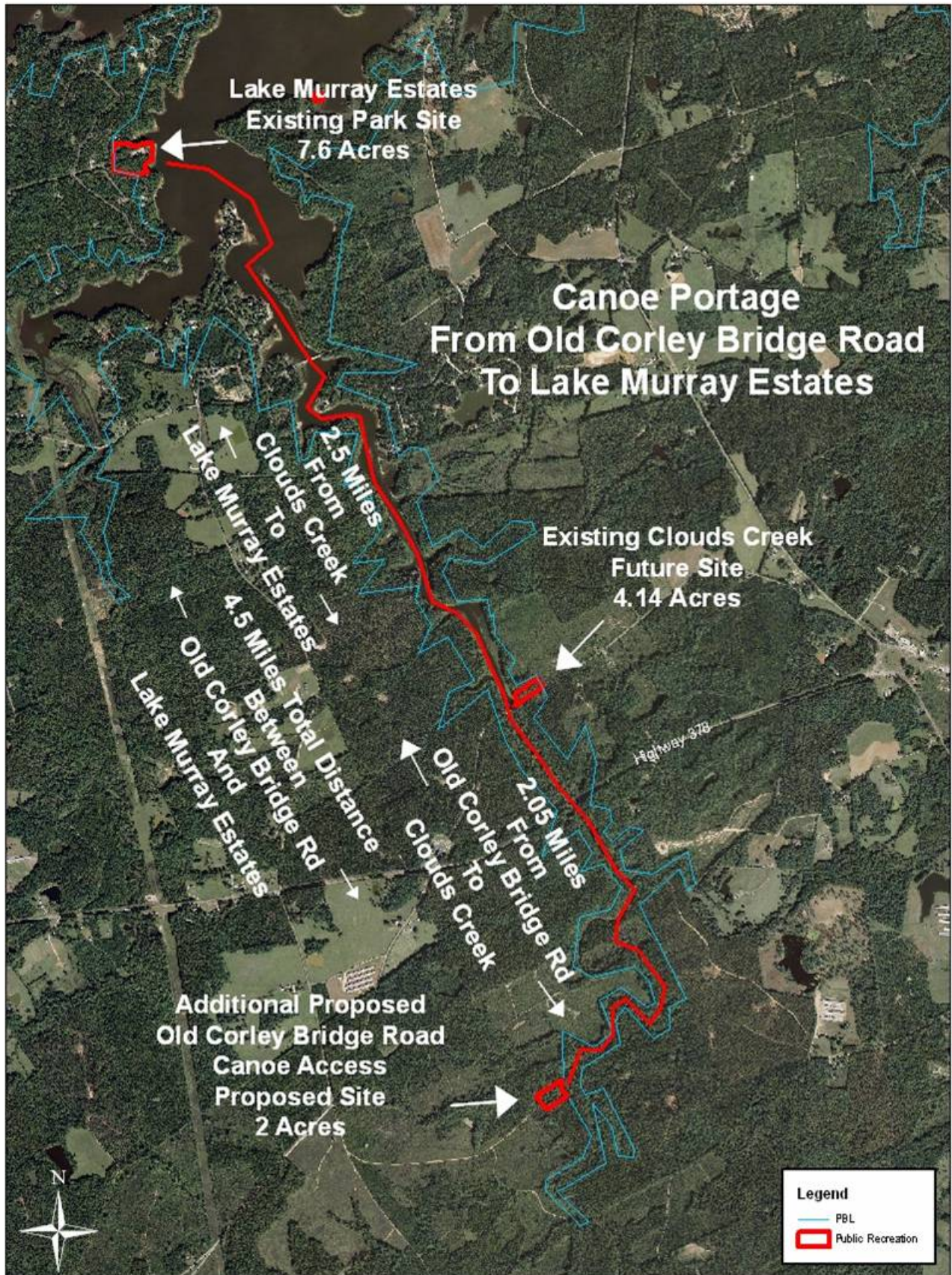
**Proposed Future  
Recreation Site  
Crayne's Bridge Park  
9.93 Acres Inside PBL  
3,710.13 Ft Shoreline**

**Forest Management Property  
4.84 Acres  
1,200 Ft Shoreline  
Inside PBL**

**FDID# 332  
5.4 Acres  
1,510.13 Ft Shoreline  
Inside PBL**

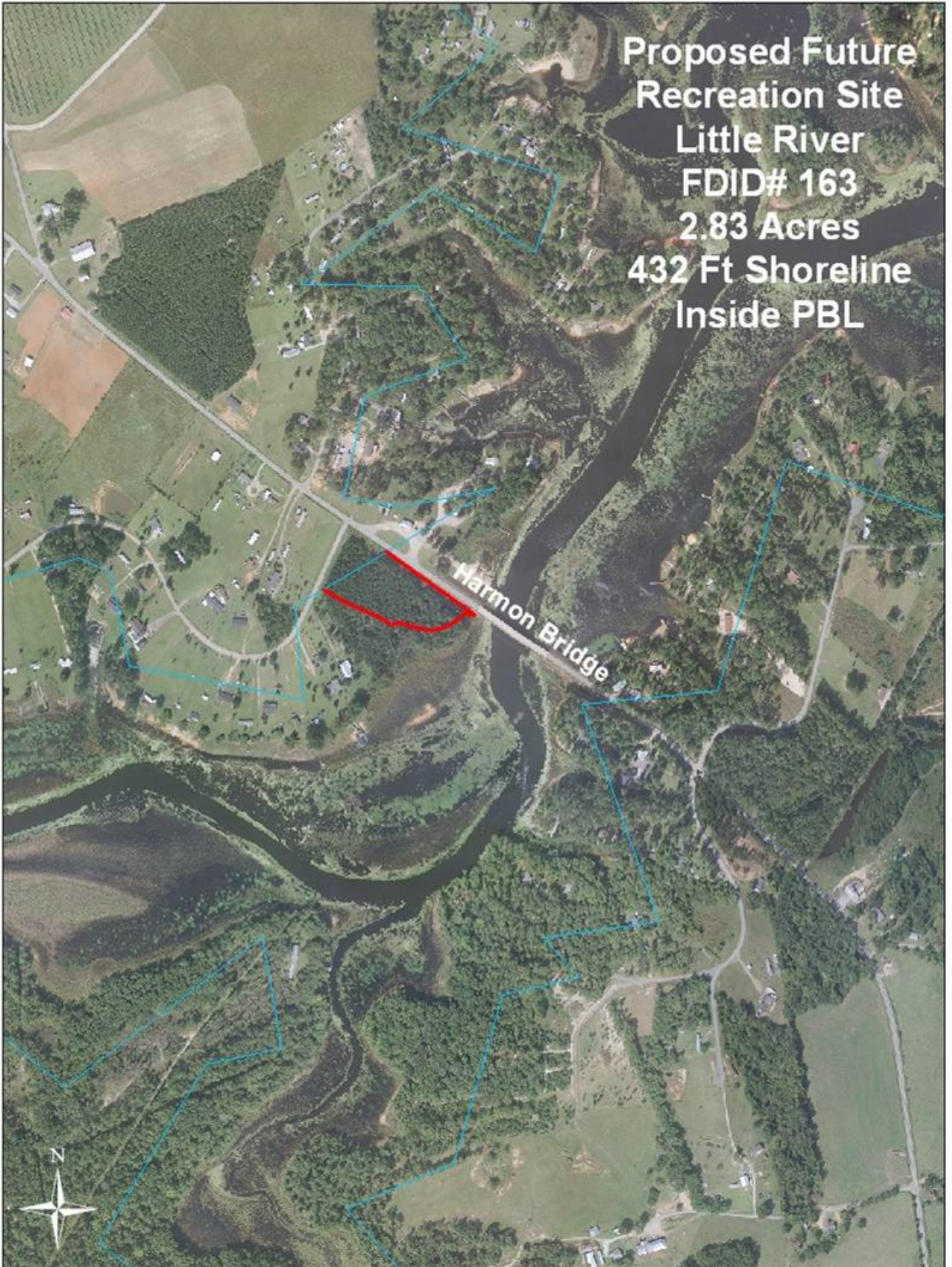






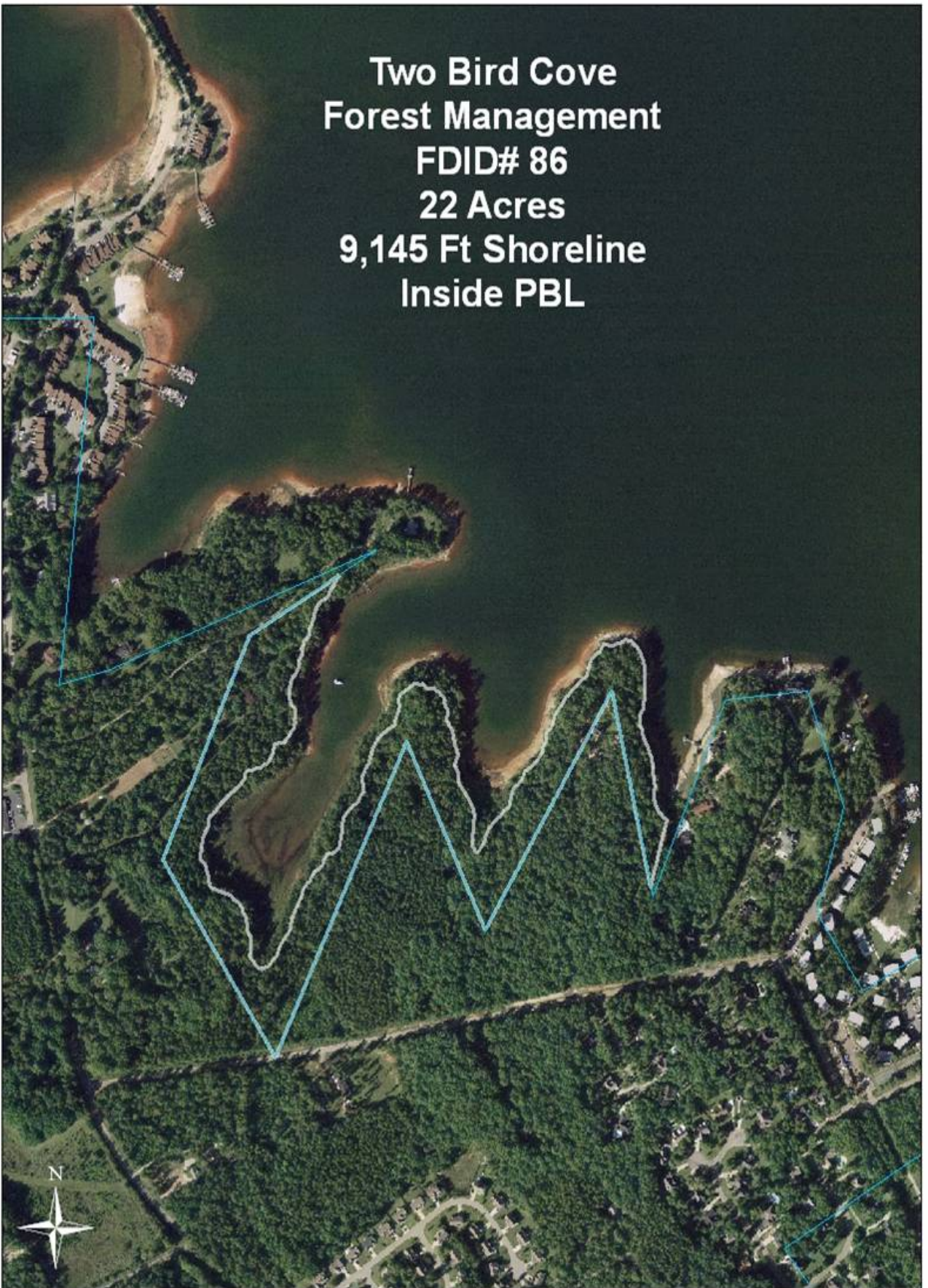


Proposed Future  
Recreation Site  
Little River  
FDID# 163  
2.83 Acres  
432 Ft Shoreline  
Inside PBL





**Two Bird Cove  
Forest Management  
FDID# 86  
22 Acres  
9,145 Ft Shoreline  
Inside PBL**



# Existing Park Sites

<b>Site Name (Site Number)</b>	<b>Acres</b>	<b>Shoreline</b>
Billy Dreher State Park (1-11)	348	12Miles
Dam (1-8)	6.8	1388Ft
Higgins Bridge (1-13)	1.1	375Ft
Hilton (1-7)	4.4	1219Ft
Kempson Bridge (1-14)	2.93	600Ft
Lake Murray Estates (1-22)	5	910Ft
Macedonia Church (1-12)	5.3	2491Ft
Murray Shores (1-3)	1.6	1016Ft
Parksite (1-1)	17.9	2271Ft
River Bend (1-4 & 4-A)	11.6	2720Ft
Rocky Point Creek (1-6)	1.7	258Ft
Shull Island (1-2B)	0.36	115.5Ft
Shull Island / Larry Koon (1-2)	2.2	434Ft
Sunset 1-(5)	2.3	640Ft
<b>Total</b>	<b>411.19</b>	<b>14.8 Miles</b>



# Existing Future Sites

<b>Future Sites</b>	<b>Acres</b>	<b>Shoreline</b>
Shull Island (1-2A)	22.4	0
Simpson's Ferry (5-A)	11.58	3247Ft
Long Pine (6-A)	31.4	9580Ft
Hilton (1-7A)	27.86	1755Ft
Water Treatment Plant (16)	4.3	1429Ft
Stone Mountain (17)	26.47	10260Ft
Cloud's Creek (18)	3.04	3765Ft
Big Creek (19)	22.34	2613Ft
Little Saluda Point (20)	15.14	3765Ft
Bundrick Island (21)	87.89	2.23Miles
<b>Total</b>	<b>252.42</b>	<b>9.12 Miles</b>

# Islands and Lower Saluda River Existing Recreation

Site Name (Site Number)	Acres	Shoreline
Islands (62)	<b>100</b>	<b>13.81 Miles</b>
<b>Lower Saluda River</b>		
Hope Ferry - Metts Landing (1-10)	1	150Ft
Saluda River Canoe Portage (1-15)	4.6	210Ft
Saluda Shoals Park (1-9)	160	1.3Miles
<b>Total</b>	<b>165.6</b>	<b>1.36 Miles</b>



# Proposed New Future Recreation Sites

<b>Proposed Future Sites</b>	<b>Acres</b>	<b>Shoreline</b>
River Bend	5.64	787Ft
Sunset	5.5	2300Ft
Candy Lane	3.08	400Ft
Shull Island	5.5	0
12 Mile Creek	52	1240Ft
Little River – Harmon’s Bridge	2.83	432Ft
Shealy Road Access	15.62	1.5Miles
Crayne's Bridge Park	10.24	3710Ft
Shealy Tract	40	7968Ft
Little Saluda Point	14.18	1147Ft
Rocky Creek	102	5Miles
Old Corley Bridge Road Canoe Access	2	150Ft
<b>Total</b>	<b>258.59</b>	<b>99.93 Miles</b>

**Total Acreage Inside PBL =**

**258.59**

# Summary

	Acres	Shoreline
Existing Recreation Sites (Includes Billy Dreher Island)	411.19	14.7 Miles
Existing Future Recreation Sites	252.42	9.12 Miles
Islands (62)	100	13.81Miles
Lower Saluda River Recreation Sites	165.6	1.36Miles
Proposed New Future Recreation Sites	258.59	9.93 Miles
<b>Total</b>	<b>1187.81</b>	<b>48.92Miles</b>